

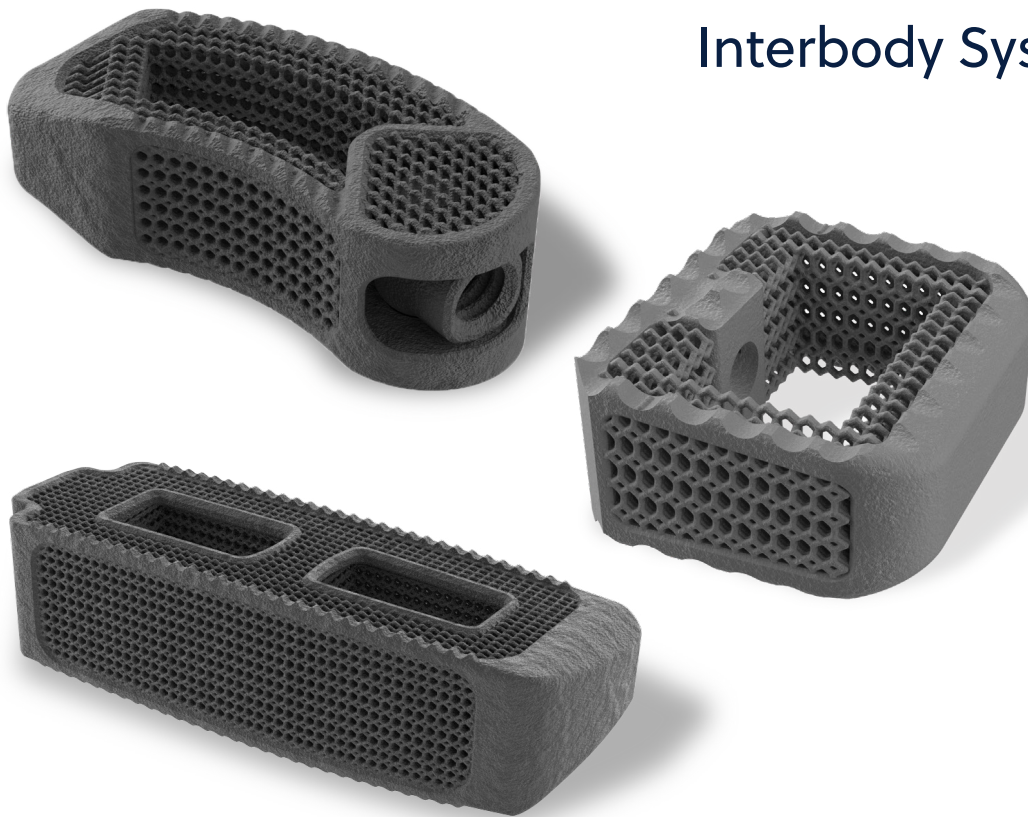


Imaging
Overview



TrellOss[®]

Porous Ti
Interbody System



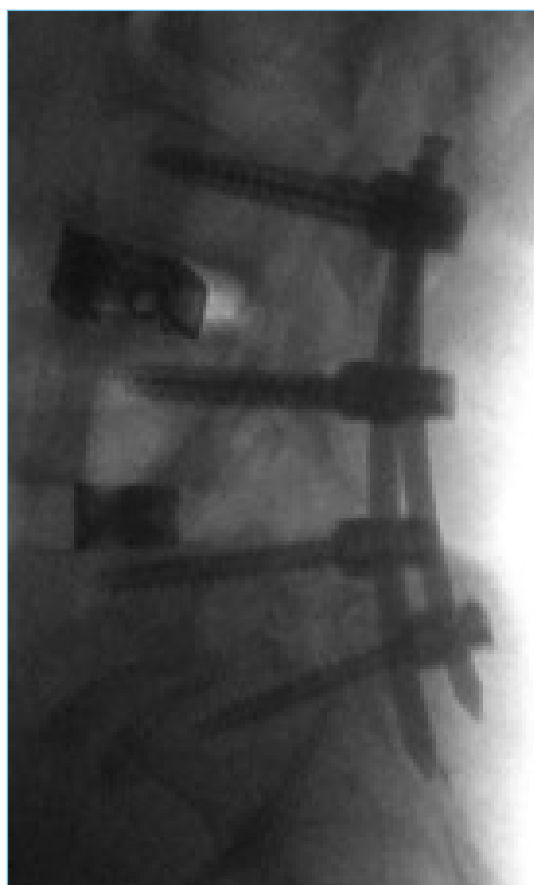
 **ZimVie**

ZimVie SURGICAL SOLUTIONS

Lumbar Imaging CT: Fluoroscopic Images TrellOss®-L | TrellOss®-TC



AP View

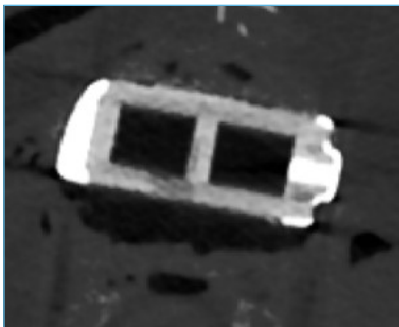


Lateral View

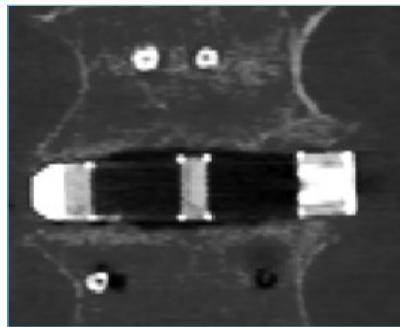
Lumbar Imaging CT: Images TrellOss®-L | TrellOss®-TC



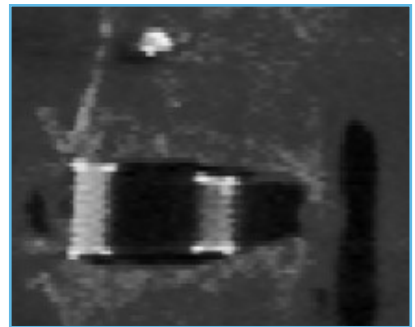
TrellOss-L at L3-L4



Axial Slice

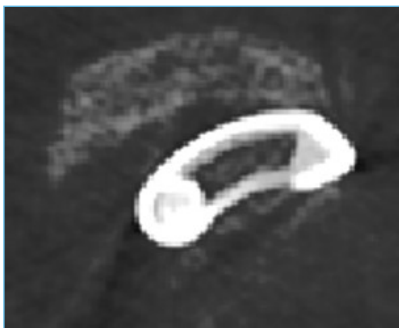


Coronal Slice

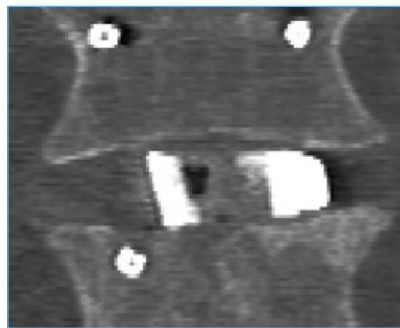


Sagittal Slice

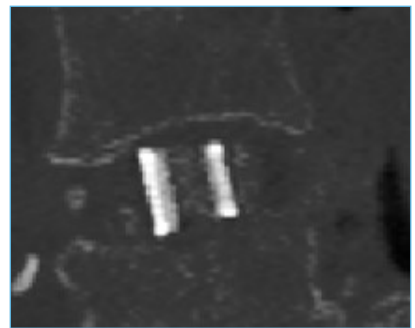
TrellOss-TC at L4-L5



Axial Slice

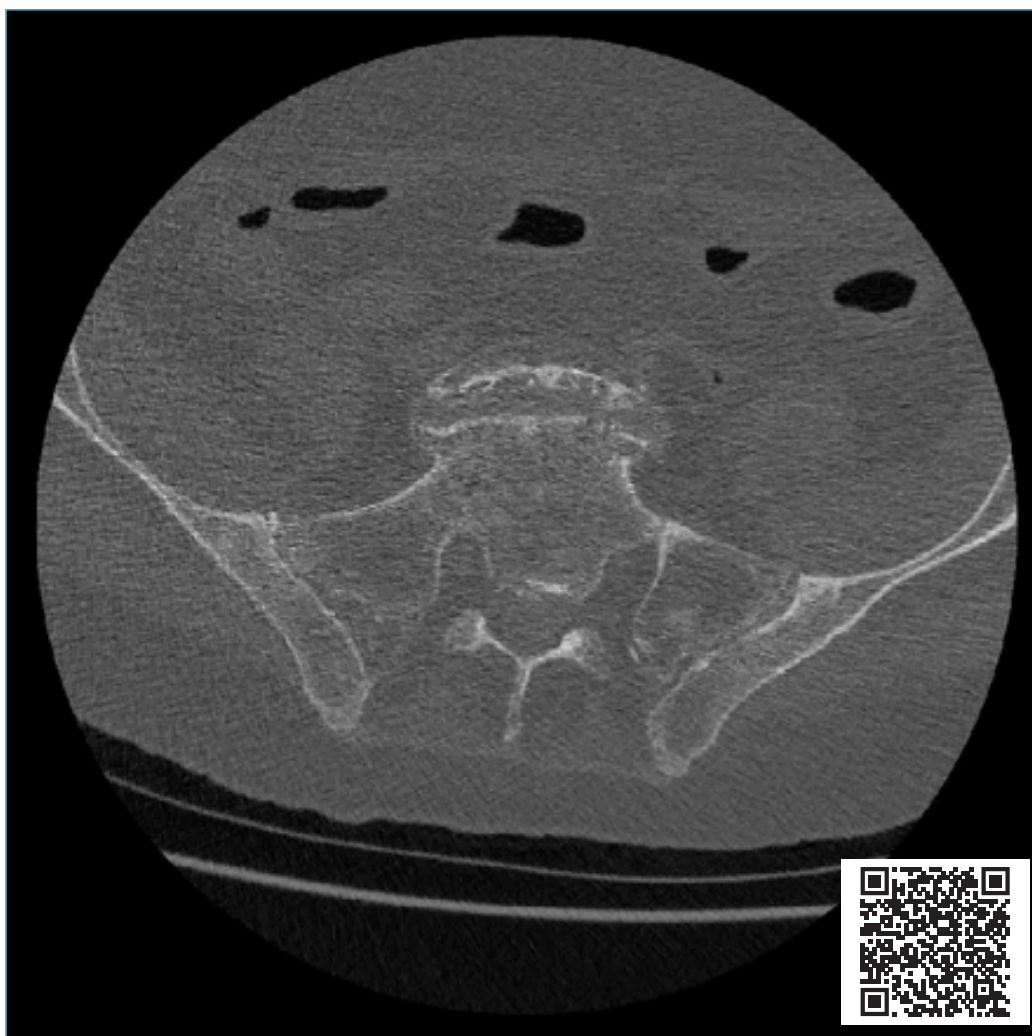


Coronal Slice



Sagittal Slice

Lumbar Imaging: CT Images TrellOss®-L | TrellOss®-TC



Lumbar Axial CT Sequence

Utilize QR code for animation

Lumbar Imaging: MRI Images TrellOss®-L | TrellOss®-TC



TrellOss-L at L3-L4

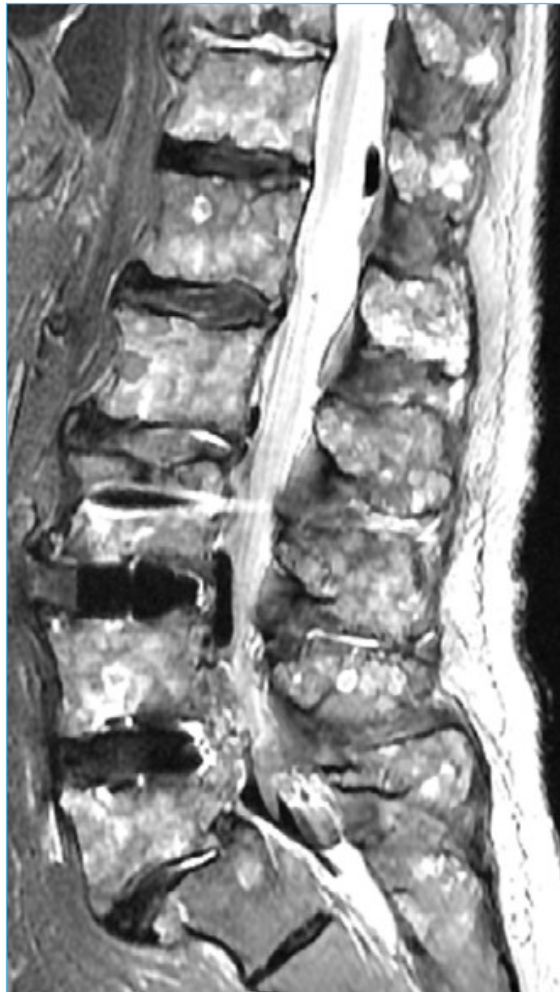


Axial Slice

TrellOss-TC at L4-L5

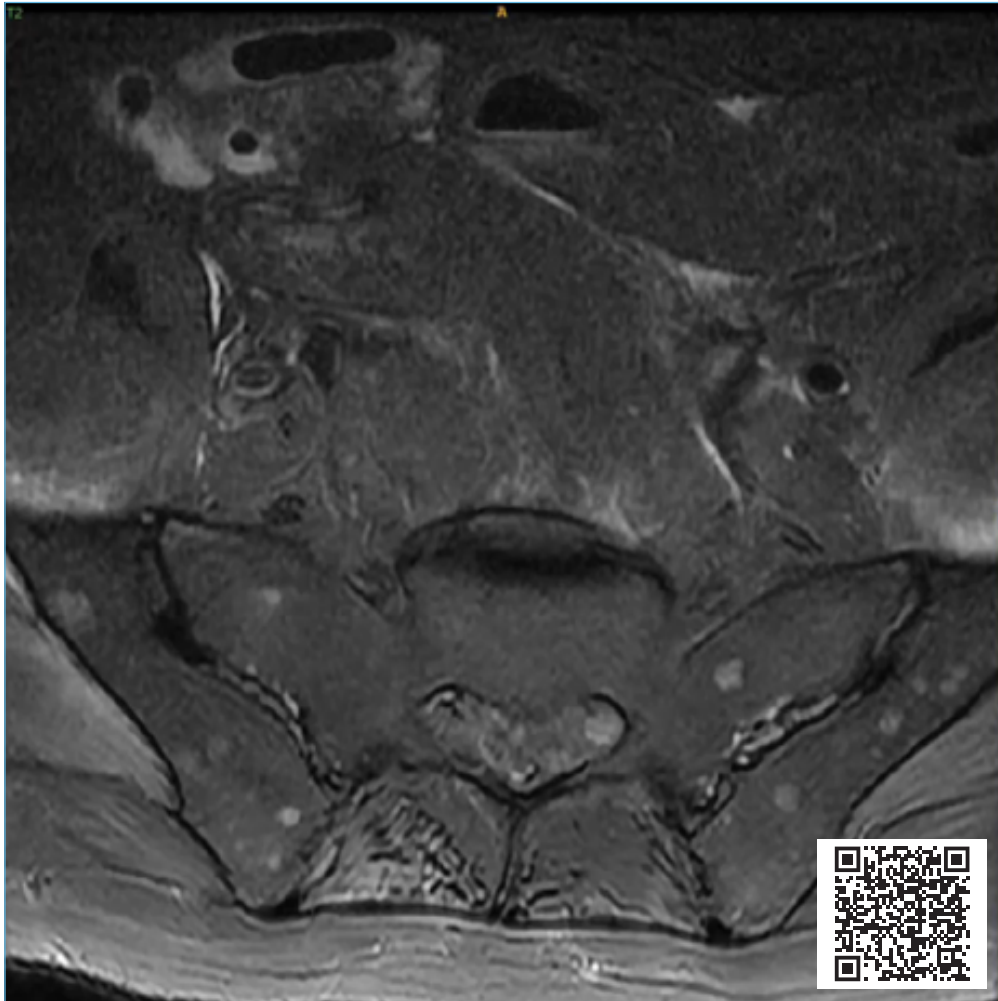


Axial Slice



Sagittal Slice

Lumbar Imaging: MRI Images TrellOss®-L | TrellOss®-TC



Lumbar Axial MRI Sequence

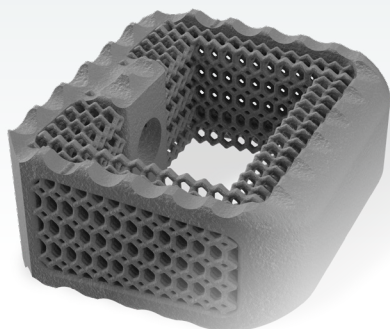
Utilize QR code for animation

Lumbar Imaging: MRI Images TrellOss®-L | TrellOss®-TC

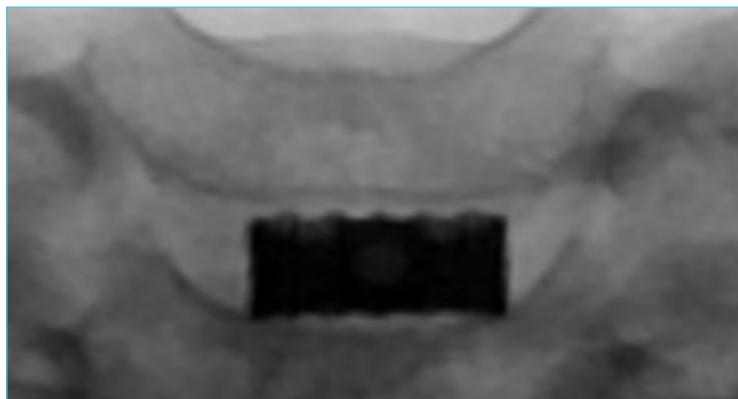


Lumbar Sagittal MRI Sequence Utilize QR code for animation

Cervical Imaging: Flourosopic Images TrellOss® -C

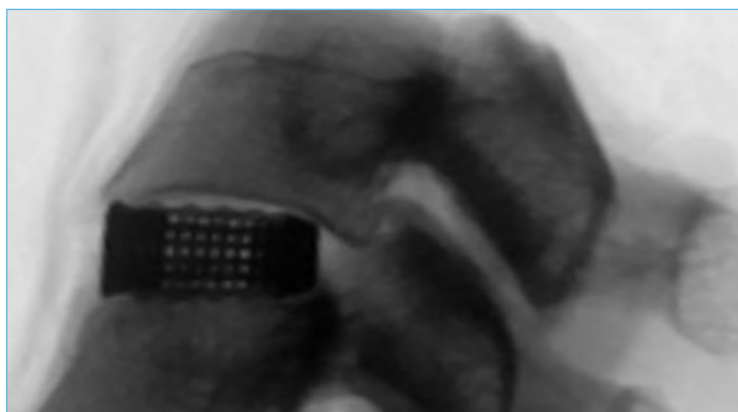


TrellOss-C at C4-C5



AP View

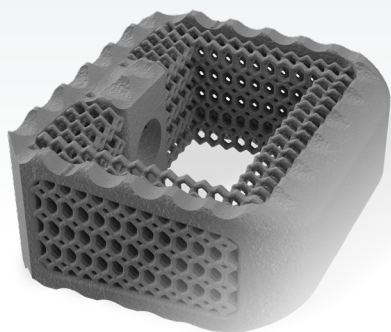
TrellOss-C at C4-C5



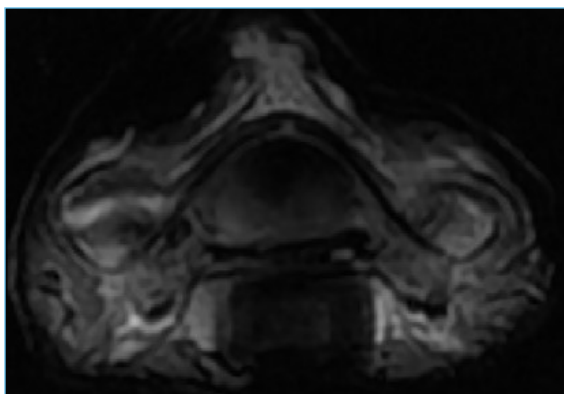
Lateral View

Note: TrellOss-C is indicated for use with supplemental fixation and should not be used in stand-alone applications.

Cervical Imaging: MRI and CT Images TrellOss®-C

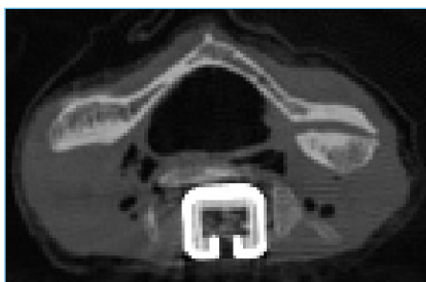


TrellOss-C at C4-C5 MRI Image



Axial Slice

TrellOss-C at C4-C5 CT Images



Axial Slice



Sagittal Slice

Note: TrellOss-C is indicated for use with supplemental fixation and should not be used in stand-alone applications.

For more information, visit [ZimVie.com](https://www.zimvie.com)

ZimVie Spine
10225 Westmoor Drive
Westminster, CO 80021
[ZimVie.com](https://www.zimvie.com)

Manufactured by:
Nexxt Spine, LLC
14425 Bergen Blvd, Suite B
Noblesville, IN 46060
Ph: 317.436.7801
Fax: 317.245.2518

Distributed by:
ZimVie Spine
10225 Westmoor Drive
Westminster, CO 80021



Disclaimer: This document is intended exclusively for physicians and is not intended for laypersons. Information on the products and procedures contained in this document is of a general nature and does not represent and does not constitute medical advice or recommendations. Because this information does not purport to constitute any diagnostic or therapeutic statement with regard to any individual medical case, each patient must be examined and advised individually, and this document does not replace the need for such examination and/or advice in whole or in part.

Caution: Federal (USA) law restricts this device to sale by or on the order of a physician.

Rx Only. Please see the product Instructions for Use for a complete listing of the indications, contraindications, precautions, warnings and adverse effects.

©2023 ZimVie, Inc. All rights reserved.

All content herein is protected by copyright, trademarks and other intellectual property rights owned by or licensed to ZimVie, Inc. or one of its affiliates unless otherwise indicated, and must not be redistributed, duplicated or disclosed, in whole or in part, without the express written consent of ZimVie. This material is intended for health care professionals and the ZimVie Spine sales force. Distribution to any other recipient is prohibited. PEEK OPTIMA is a trademark of Invivo Biomaterial Solutions. ZV1019-US-en-Rev0423