


Unless otherwise indicated, as referenced herein, all trademarks and intellectual property rights are the property of Zimmer Spine, Inc. or an affiliate; and all products are manufactured by one or more of the spinal subsidiaries of Zimmer Spine, Inc. (Zimmer Spine, Inc., Zimmer Spine, LDR Medical, etc.) and marketed and distributed by Zimmer Spine and its authorized marketing partners: LDR, LDR Spine, LDR Medical, Avenue, BF+, BF+(Ph), Bi-Pack, C-Plate, EasySpine, EasySpine, Laminotomy, L90, MC+, Mobi, Mobi-C, Mobi-L, Mobdisc, ROI, ROI-A, ROI-C, ROI-MC+, ROI-T, SpineTune and VerteBRIDGE are trademarks or registered trademarks of LDR Holding Corporation or its affiliates in France, the United States and other countries. For additional product information, please refer to the individual product labeling or instructions for use. Product clearance and availability may be limited to certain countries/regions. This material is intended for clinicians only and does not comprise medical advice or recommendations. Distribution to any other recipient is prohibited. This material may not be copied or reprinted without the express written consent of Zimmer, ZV1401 REV A 09/23 ©2023 Zimmer, Inc. All rights reserved.

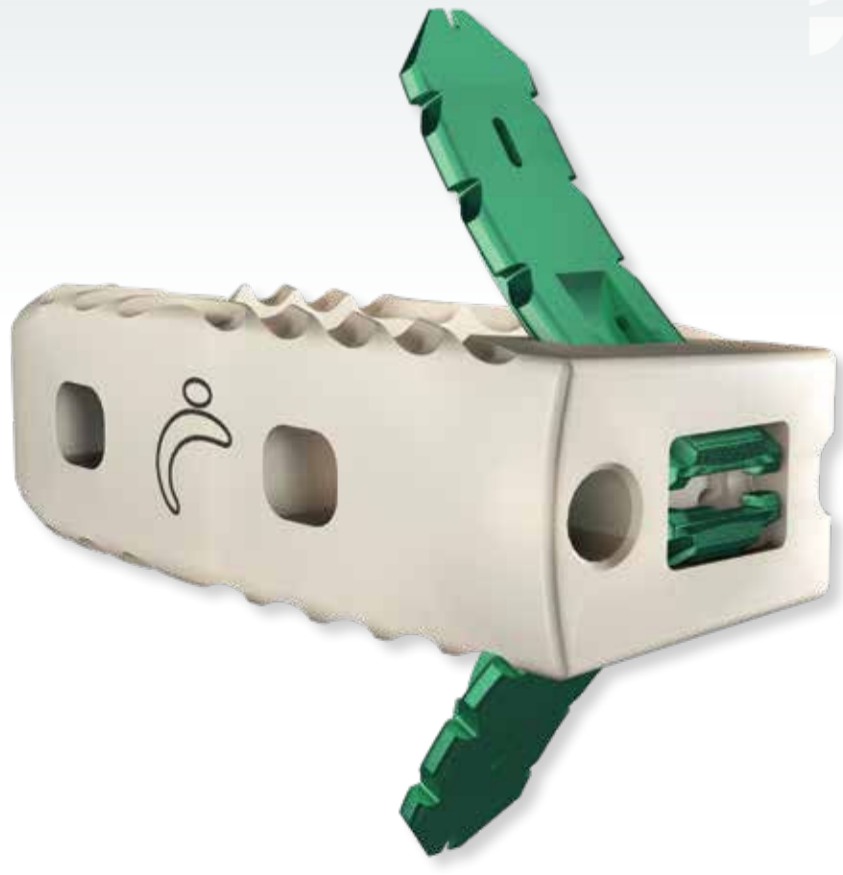
Zimmer Spine
 10225 Westmoor Drive
 Westminster, CO 80021, USA
 Zimmer.com

Zimmer
 Restoring Daily Life.

For more information, visit Zimmer.com

 Designed for strength,
 versatility and stability

Avenue® L
 Lateral Lumba Cage with

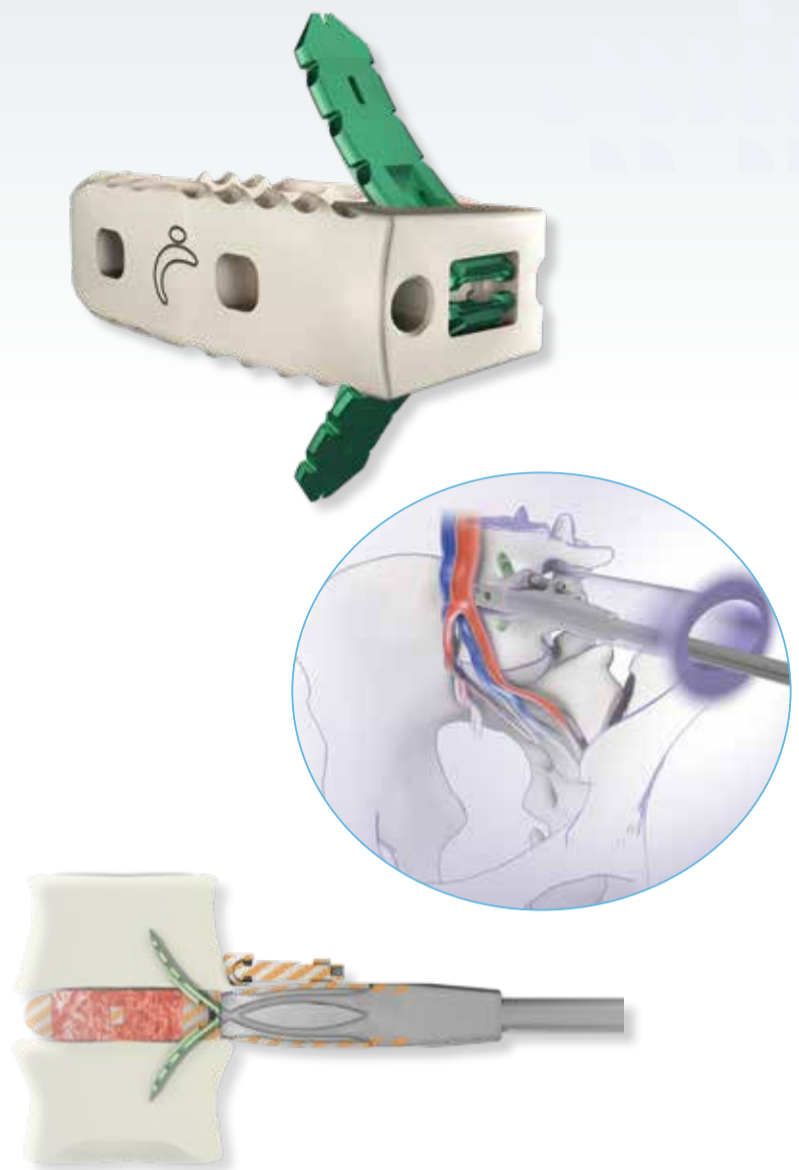


Avenue® L - Lateral Lumbar Cage

The Avenue® L Lateral Lumbar Cage is designed for strength, versatility and stability. It represents the pinnacle of lateral lumbar cage evolution incorporating zero-profile, intradiscal, and integrated fixation. The enhanced in-line, self-guided VerteBRIDGE® Plating Technology facilitates simplified cage insertion all through a direct, minimally invasive approach.

Features

- Comprehensive offering of footprints to meet different patient anatomy and provide for optimal endplate contact
- Bevelled nose to ease insertion
- I-beam design to increase the rigidity of the cage and support the graft during insertion into the intervertebral space
- Intra-operative adjustment of the Cage Holder to ensure optimal positioning of the cage prior to insertion of VerteBRIDGE plating
- Guided in-line plate delivery
- Sterile packaging for assured product quality and absolute traceability



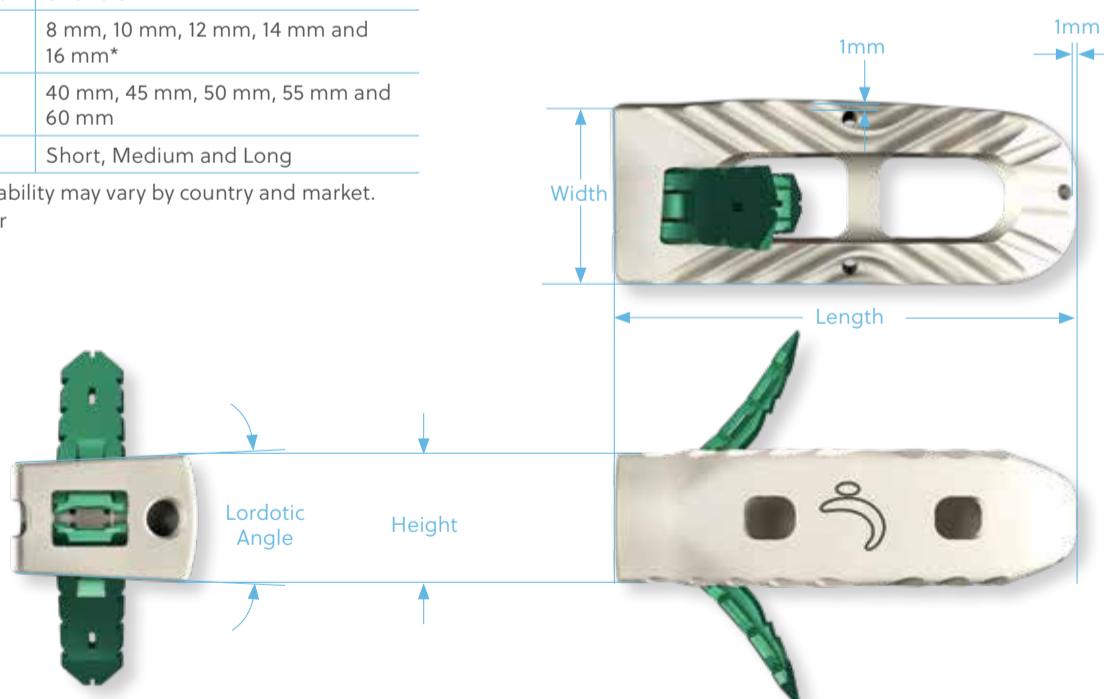
Dimensions

Product Range and Sizing †

Widths	17 mm and 22 mm
Lordotic Angles	0° and 6°
Heights	8 mm, 10 mm, 12 mm, 14 mm and 16 mm*
Lengths	40 mm, 45 mm, 50 mm, 55 mm and 60 mm
Plate Lengths	Short, Medium and Long

† Product availability may vary by country and market.

* Special Order



Featuring VerteBRIDGE® Plating Technology

- Zero-profile design with no hardware protruding lateral of the vertebral bodies
- Self-locking plates designed for initial and long-term stability
- Self-guided, curved plates ease insertion
- Inserter provides protection of **anatomic structures** during plate placement
- Innovative plate delivery system optimized for the direct lateral approach



Indications for use in the U.S.:

The Avenue® L Interbody Fusion System is indicated for intervertebral body fusion of the lumbar spine, from L2 to S1, in skeletally mature patients who have had six months of non-operative treatment. The device is intended for use at either one level or two contiguous levels for the treatment of degenerative disc disease (DDD) with up to Grade I spondylolisthesis. DDD is defined as back pain of discogenic origin with degeneration of the disc confirmed by history and radiographic studies. The device system is designed for use with or without integrated fixation and must be used in conjunction with posterior supplemental fixation (e.g. pedicle screws). The device system is intended for use with autograft to facilitate fusion.