



Expandable spacer with  
Osseo-LOC™ surface technology



# Prolift®

Interbody Spacer System



## Expand Your Horizons

The ProLift expandable interbody system with Osseo-Loc surface technology provides a micro-invasive solution for TLIF and PLIF procedures with in situ expansion for restoration of normal anatomic disc height and decompression of neural elements.

The ProLift system features streamlined instrumentation which provides minimal tissue disruption and nerve retraction while achieving surgical goals and restoring patient alignment.



### Controlled

- In situ expansion with continuous adjustability allows for foraminal and disc height restoration
- Physiologic levels of lordosis
- Bulleted tip eases insertion



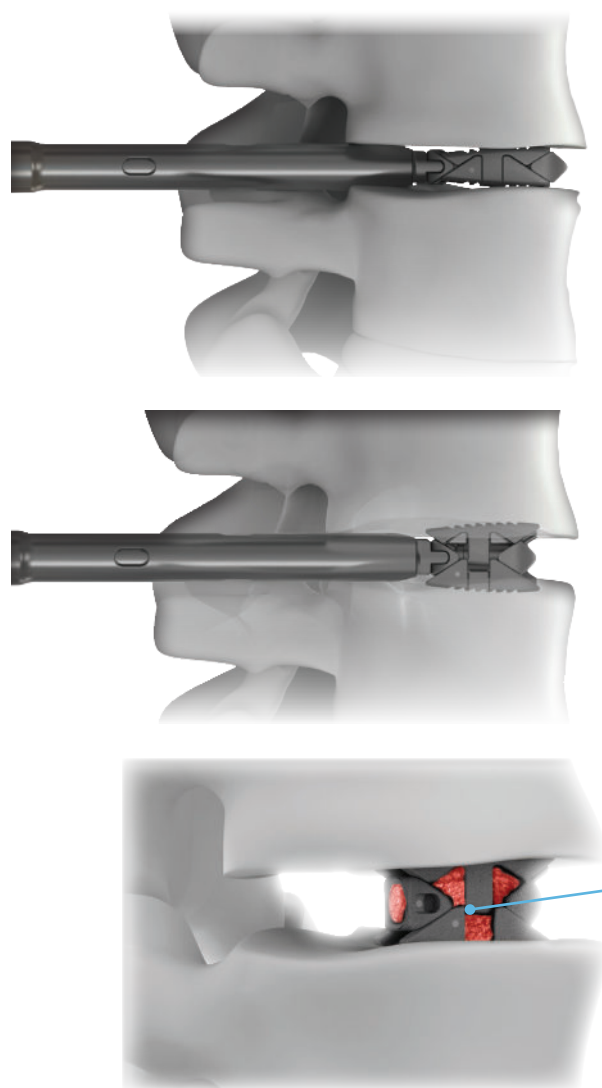
### Streamlined

- Minimal tissue disruption, minimal nerve retraction
- Post pack design allows for insertion of graft material after expansion



### Advanced

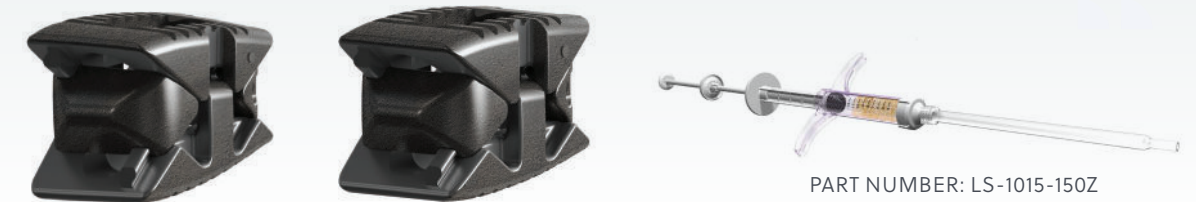
- 400-600 micron porosity
- Surface architecture provides earlier bone on-growth<sup>1</sup>



## Biologics

### Osteo-Line Graft Delivery System

Engineered to deliver up to 15 cc of autograft and/or allogenic bone graft directly to orthopedic site in situ



PART NUMBER: LS-1015-150Z

## Implant Sizes

### PROLIFT SIZING

W x L, EXPANSION RANGE, LORDOSIS	ANTERIOR HEIGHT COLLAPSED	MAXIMUM HEIGHT COLLAPSED	POSTERIOR HEIGHT COLLAPSED	ANTERIOR HEIGHT EXPANDED	MAXIMUM HEIGHT EXPANDED	POSTERIOR HEIGHT EXPANDED	PART NUMBER
10 mm x 28 mm, 8 mm-13 mm, 0°	7.6 mm	8 mm	7.6 mm	12.1 mm	13 mm	12.1 mm	58-1028-0813Z
10 mm x 28 mm, 8 mm-13 mm, 7°	7.7 mm	8 mm	7.2 mm	12.3 mm	13 mm	11.1 mm	58-1028-0708Z
10 mm x 28 mm, 8 mm-13 mm, 12°	7.7 mm	8 mm	7.2 mm	12.3 mm	13 mm	10.8 mm	58-1028-1208Z
10 mm x 28 mm, 8 mm-13 mm, 15°	7.7 mm	8 mm	7.2 mm	12.3 mm	13 mm	10.4 mm	58-1028-1508Z
10 mm x 28 mm, 10 mm-16 mm, 0°	9.1 mm	10 mm	9.1 mm	15.1 mm	16 mm	15.1 mm	58-1028-1016Z
10 mm x 28 mm, 10 mm-16 mm, 7°	9.2 mm	10 mm	8.2 mm	15.2 mm	16 mm	14.1 mm	58-1028-0710Z
10 mm x 28 mm, 10 mm-16 mm, 12°	9.2 mm	10 mm	8.2 mm	15.2 mm	16 mm	13.7 mm	58-1028-1210Z
10 mm x 28 mm, 10 mm-16 mm, 15°	9.2 mm	10 mm	8.2 mm	15.2 mm	16 mm	13.3 mm	58-1028-1510Z
12 mm x 28 mm, 8 mm-13 mm, 0°	7.6 mm	8 mm	7.6 mm	12.1 mm	13 mm	12.1 mm	58-1228-0813Z
12 mm x 28 mm, 8 mm-13 mm, 7°	7.7 mm	8 mm	7.2 mm	12.3 mm	13 mm	11.1 mm	58-1228-0708Z
12 mm x 28 mm, 8 mm-13 mm, 12°	7.7 mm	8 mm	7.2 mm	12.3 mm	13 mm	10.8 mm	58-1228-1208Z
12 mm x 28 mm, 8 mm-13 mm, 15°	7.7 mm	8 mm	7.2 mm	12.3 mm	13 mm	10.4 mm	58-1228-1508Z
12 mm x 28 mm, 10 mm-16 mm, 0°	9.1 mm	10 mm	9.1 mm	15.1 mm	16 mm	15.1 mm	58-1228-1016Z
12 mm x 28 mm, 10 mm-16 mm, 7°	9.2 mm	10 mm	8.2 mm	15.2 mm	16 mm	14.1 mm	58-1228-0710Z
12 mm x 28 mm, 10 mm-16 mm, 12°	9.2 mm	10 mm	8.2 mm	15.2 mm	16 mm	13.7 mm	58-1228-1210Z
12 mm x 28 mm, 10 mm-16 mm, 15°	9.2 mm	10 mm	8.2 mm	15.2 mm	16 mm	13.3 mm	58-1228-1510Z

### ProLift Locking Mechanism

- Gear arrangement designed to prevent forward/backward motion
- Load on end-plates is perpendicular to gear teeth angle
- Only a rotational force applied to the gear will expand/collapse



## References

1. Feighan, J.E., Goldberg, V.M., Davy, D., Parr, J.A., Stevenson, S. The Influence of Surface Blasting on the Incorporation of Titanium-Alloy Implants in a Rabbit Intramedullary Model, *The Journal of Bone and Joint Surgery* 77.9 (1995): 1380-96. Web.

For more information, visit [ZimVie.com](https://www.zimvie.com)

ZimVie  
10225 Westmoor Drive  
Westminster, CO 80021, USA



Unless otherwise indicated, as referenced herein, all trademarks and intellectual property rights are the property of ZimVie Inc. or an affiliate; and all products are manufactured by one or more of the spinal subsidiaries of ZimVie Inc. (Zimmer Biomet Spine, Inc., Zimmer Spine, LDR Medical, etc.) and marketed and distributed by ZimVie Spine and its authorized marketing partners. Prolift® Interbody Spacer System is manufactured by [Insert Alliance Partner Company Name]. For additional product information, please refer to the individual product labeling or instructions for use. Product clearance and availability may be limited to certain countries/regions. This material is intended for clinicians only and does not comprise medical advice or recommendations. Distribution to any other recipient is prohibited. This material may not be copied or reprinted without the express written consent of ZimVie.  
ZV1381 REV A 06/23 ©2023 ZimVie, Inc. All rights reserved.