

PlatFORM CM is a bone graft substitute that offers a wide range of characteristics similar to human bone.



# PlatFORM™ CM

Osteoconductive Collagen  
Mineral Bone Graft Matrix



# ■ PlatFORM CM: Osteoconductive Collagen Mineral Bone Graft Matrix

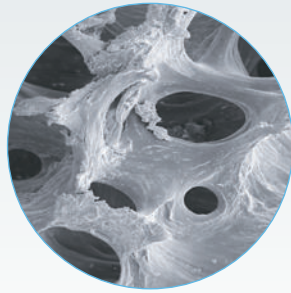
## Highly Purified Carbonate Apatite (CA) Mineral

- Superior to  $\beta$ -tricalciumphosphate ( $\beta$ -TCP) and hydroxyapatite (HA) as a bioresorbable bone graft substitute<sup>1</sup>
- Derived from all natural sources—both the collagen and mineral content are derived from bovine sources
- Resorption, remodeling and structure analogous to human bone<sup>2</sup>

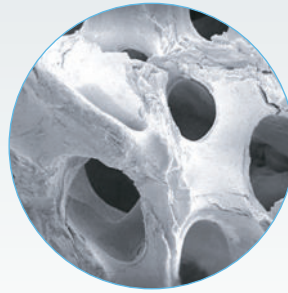
## Highly Purified Type I Collagen

- Favorable influence on cellular infiltration and protein binding<sup>3</sup>
- Resorbed and remodeled naturally in bone through normal metabolic pathways<sup>4</sup>





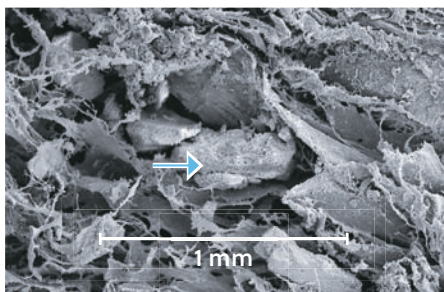
HUMAN PROCESSED BONE AT  
50X MAGNIFICATION



CA MINERAL AT  
50X MAGNIFICATION

### Porosity and Resorption

- Platform CM Putty is 55% carbonate apatite bone mineral and 45% collagen
- Platform CM Block and Strip are 80% carbonate apatite bone mineral and 20% collagen
- Pore sizes in the range of 150µm–500µm are optimal for interface activity, bone ingrowth and implant resorption<sup>5</sup>
- The majority of the pores in PlatFORM CM fall within the optimal range for all formulations<sup>6</sup>
- Resorption and remodeling profiles are similar to normal human bone
- Absorbs fluids, such as bone marrow aspirate, to deliver the complete bone growth triad—the patient's own osteogenic and osteoinductive cells in a highly osteoconductive matrix
- Rehydrate with bone marrow aspirate (BMA) to desired handling (approximately a 1:1 ratio)



PLATFORM CM BLOCK (BLUE ARROW  
DEPICTING CA PARTICLE; PARTICLE SIZE  
RANGE 0.25 MM–1.25 MM) AT  
50X MAGNIFICATION

### Flexible Strips, Malleable Putty and Compression Resistant Blocks

DESCRIPTION (LENGTH × WIDTH × HEIGHT)	PART NUMBER
PlatFORM CM Putty, 2 cc	CM68902
PlatFORM CM Putty, 5 cc	CM68905
PlatFORM CM Putty, 10 cc	CM68910
PlatFORM Block, 5 cc, 1/box (6.25 cm × 2 cm × 0.4 cm)	CM25505
PlatFORM Block, 10 cc, 1/box (6.25 cm × 2 cm × 0.8 cm)	CM25510
PlatFORM Blocks, 20 cc, 2/box (6.25 cm × 2 cm × 0.8 cm)	CM25520
PlatFORM Strip, 5 cc, 1/box, (12.5 cm × 1 cm × 0.4 cm)	CM46405
PlatFORM Strip, 10 cc, 1/box, (12.5 cm × 2 cm × 0.4 cm)	CM46410
PlatFORM Strips, 20 cc, 2/box, (12.5 cm × 2 cm × 0.4 cm)	CM46420

## References:

1. Kanayama K, Sriarj W, Shimokawa H, Ohya K, Doi Y, Shibutani T. Osteoclast and osteoblast activities on carbonate apatite plates in cell cultures. *J Biomater Appl.* 2011;(26):435–436.
2. Matsuura A, Jubo T, Doi K, Hayashi K, Morita K, Toyota R, Hayashi H, Hirata I, Okazaki M, and Akagawa Y. Bone formation ability of carbonate apatite-collagen scaffolds with different carbonate contents. *Dental Materials Journal.* 2009;(2):234–242.
3. Geiger M, Li, R.H., Friess, W. Collagen sponges for bone regeneration with rhBMP-2. *Advanced Drug Delivery Reviews.* 2003;(55):1613–1629.
4. Li ST. Biologic Biomaterials: Tissue-derived biomaterials (collagen). In: Bronzino JD, ed. *Biomedical Engineering Handbook*, 2nd ed. Boca Raton, FL: CRC Press; 2000.
5. Vaccaro A. The role of the osteoconductive scaffold in synthetic bone graft. *Orthopedic News.* Vol. 25 No. 5/Supplement: 2002;571–578.
6. Data on file at Collagen Matrix (#OssiMend-Mkt-2012, Pore Size Analysis Report for OssiMend Strip and OssiMend Block).

For more information, visit [ZimVie.com](https://www.zimvie.com)

**ZimVie Spine**  
10225 Westmoor Drive  
Westminster, CO 80021  
[ZimVie.com](https://www.zimvie.com)



Unless otherwise indicated, as referenced herein, all trademarks and intellectual property rights are the property of ZimVie Inc. or an affiliate; and all products are manufactured by one or more of the spinal subsidiaries of ZimVie Inc. (Zimmer Biomet Spine, Inc., Zimmer Spine, LDR Medical, etc.) and marketed and distributed by ZimVie Spine and its authorized marketing partners. PlatFORM™ CM Osteoconductive Collagen Mineral Bone Graft Mix is manufactured by Collagen Matrix. For additional product information, please refer to the individual product labeling or instructions for use. Product clearance and availability may be limited to certain countries/regions. This material is intended for clinicians only and does not comprise medical advice or recommendations. Distribution to any other recipient is prohibited. This material may not be copied or reprinted without the express written consent of ZimVie.  
ZV1227 REV A 05/23 ©2023 ZimVie, Inc. All rights reserved.