



Shaping the  
Future of DBM



# InterGro<sup>®</sup> DBM



## InterGro DBM Family: Shaping the Future of DBM

InterGro DBM is a verified, osteoinductive and demineralized bone matrix in a natural lecithin carrier, and is available as:

- DBM Putty—40% DBM content by weight
- DBM Paste—35% DBM content by weight
- DBM Plus—35% DBM content by weight and premixed with resorbable coralline hydroxyapatite/calcium carbonate granules

**The natural quality of the carrier and its outstanding containment and handling characteristics enable the surgeon to mold it to surgical sites, even in the presence of excessive fluids and under lavage.**



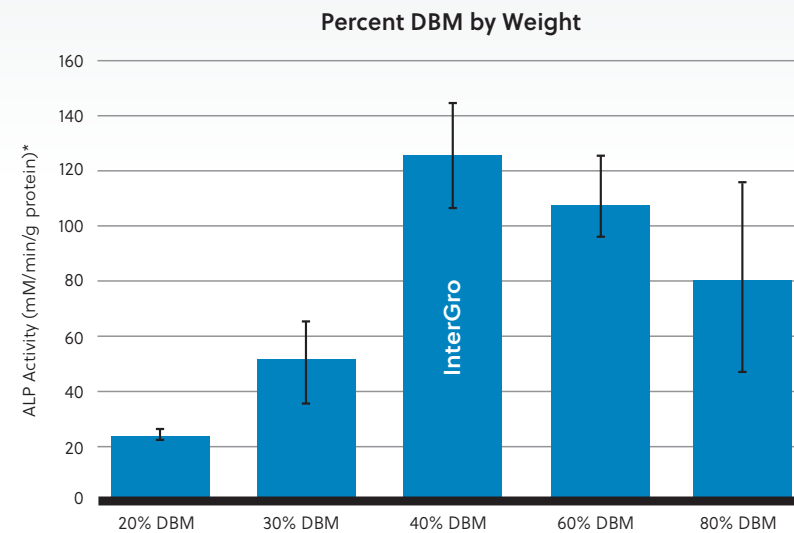
### InterGro DBM Family

- Resistant to irrigation and migration—formulated with a natural lipid carrier that is resistant to breakdown by bodily fluids or temperature
- Excellent handling and performance characteristics—tolerates lavage/irrigation
- Engineered to deliver optimized osteoinductivity
- Every lot is bioassayed to demonstrate osteoinductive capabilities
- Off-the-shelf, moldable tissue graft; no mixing required—use with your preferred technique
- InterGro Plus also contains Pro Osteon® 500R Resorbable Granules, which provide additional osteoconductive scaffolding and radiopacity
- Easy to use—preloaded in a syringe and stored at room temperature
- Tissue undergoes extensive viral, microbiological and serological testing
- Comes in an array of convenient delivery sizes for a range of uses



## InterGro DBM—Why Compromise?

InterGro DBM has been scientifically formulated to deliver optimized characteristics without compromise. InterGro DBM delivers biocompatibility, preferred handling, verified osteoinductivity and optimized active DBM content.



### Optimized Biologic Activity

InterGro DBM is engineered to deliver optimized biologic activity. This was achieved by optimizing the lecithin/DBM ratio at 60/40.<sup>1</sup>

### Biocompatibility

The carrier used in InterGro DBM is composed primarily of phosphatidylcholine, commonly referred to as lecithin.

Lecithin is:

- 100% natural, derived from soybeans
- Absorbed by the human body
- Key component of cell membrane

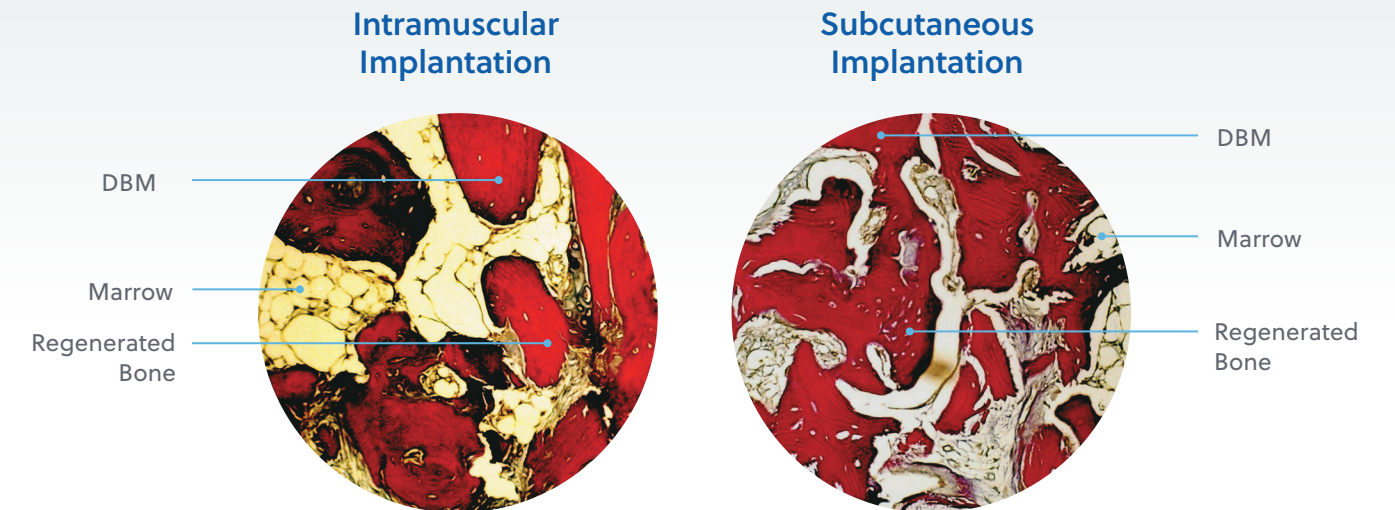
The lecithin carrier helps to keep the DBM in situ as compared to DBM alone.<sup>1</sup>

### Verified Osteoinductivity

Each lot is tested for osteoinductivity with the C2C12 assay.<sup>2</sup> This ensures that only lots with verified osteoinductivity are released.

<sup>1</sup>Alkaline phosphatase activity (ALP) is used as a marker for osteoinductivity.

## Histology of DBM + Lecithin Implant



### 4 Weeks Postimplantation

- Intramuscular and subcutaneous implantation sites
- Abundant bone growth seen in the DBM + Lecithin implants
- Total bone and tissue volume increased in the DBM + Lecithin implants<sup>1</sup>

### Nontoxicity of Lecithin

In an animal model, rats were implanted with lecithin grafts to determine the overall level of toxicity. All the rats exposed to the lecithin grafts lived and remained asymptomatic.<sup>3</sup>

#### LECITHIN GRAFTS

DOSE (PER 100g RAT)	OUTCOMES
0.8g	100% alive and asymptomatic
1.6g	100% alive and asymptomatic
2.0g	100% alive and asymptomatic

# InterGro DBM Product Offering

## InterGro DBM Paste

DESCRIPTION	CATALOG NUMBER	ACCESSORIES PROVIDED
InterGro DBM Paste, 0.5cc	DBM050	Luer cap and nozzle cap
InterGro DBM Paste, 1cc	DBM001	
InterGro DBM Paste, 2cc	DBM002	Luer cap, nozzle cap and straight and curved extension nozzles
InterGro DBM Paste, 5cc	DBM005	

## InterGro DBM Putty

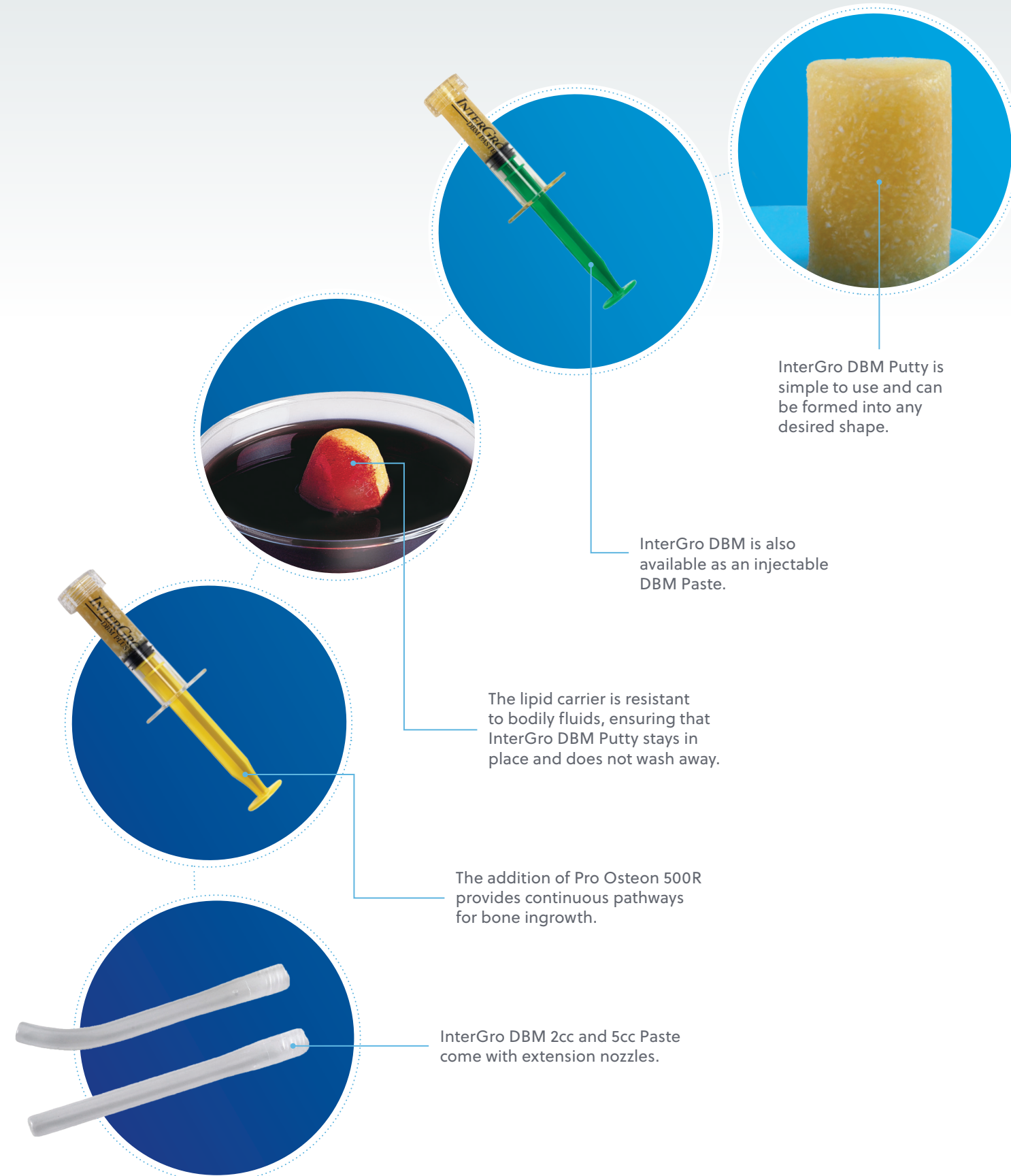
DESCRIPTION	CATALOG NUMBER	ACCESSORIES PROVIDED
InterGro DBM Putty, 10cc	DBM010	Supplied in an open bore syringe

## InterGro DBM Plus (1mm–4mm Pro Osteon 500R granules are added)

DESCRIPTION	CATALOG NUMBER	ACCESSORIES PROVIDED
InterGro DBM Plus, 2cc	DBMW02	Supplied in an open bore syringe
InterGro DBM Plus, 5cc	DBMW05	
InterGro DBM Plus, 10cc	DBMW10	

## Marketing Samples

DESCRIPTION	CATALOG NUMBER
InterGro DBM Paste, 5cc Sample	DBM005S
InterGro DBM Putty, 10cc Sample	DBM010S
InterGro DBM Plus, 5cc Sample	DBMW05S



**References:**

1. Han B, Tang B, Nimni ME. Combined effects of phosphatidylcholine and demineralized bone matrix on bone induction. *Connect Tissue Res.* 2003;44(3-4):160-6.
2. Han B, Tang B, Nimni ME. Quantitative and sensitive in vitro assay for osteoinductive activity of demineralized bone matrix. *J Orthop Res.* 2003;21(4):648-54.
3. Data on File. Internal Test Report TR-0428.

For more information, visit [ZimVie.com](https://www.zimvie.com)

**ZimVie Spine**  
10225 Westmoor Drive  
Westminster, CO 80021, USA

