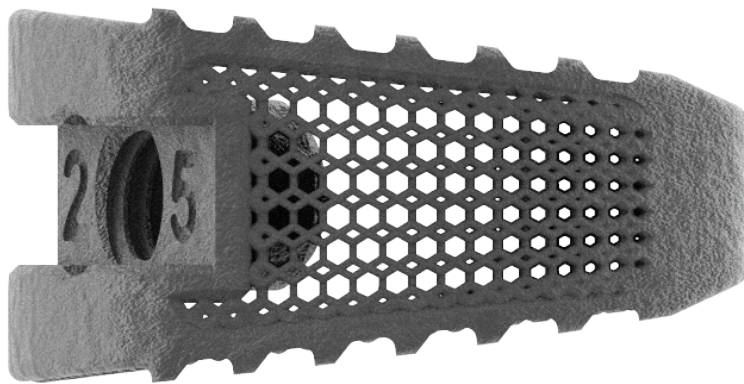




A new foundation
of growth



TrellOss[®]-A

Porous Ti Interbody
System





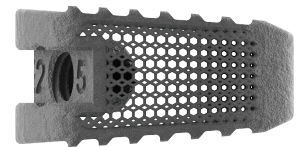
TrellOss-A

Porous Ti Interbody System

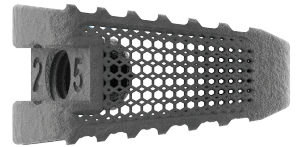
A 3D printed titanium interbody platform featuring a scaffold structure with 70% porosity and a 7 micron roughened surface topography to foster a cellular relevant environment for adhesion and bone ingrowth.¹

TrellOss-A Implant

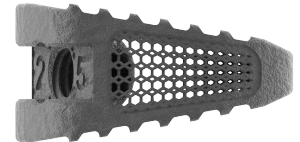
- Anti-migration teeth flank the lateral walls
- Three lordotic options: 8°, 14°, and 20°
- Two footprint options: 24 mm x 32 mm and 27 mm x 36 mm
- Three insertion options for trials and implants: 0°, 12°, 25°
- Two lumens for graft packing and containment
- Implants are sterile packed to reduce risk of contamination and hospital reprocessing costs
- Lock sleeve insertion prevents loosening upon impaction
- Distractor inserter option



8 degrees









14 degrees



20 degrees

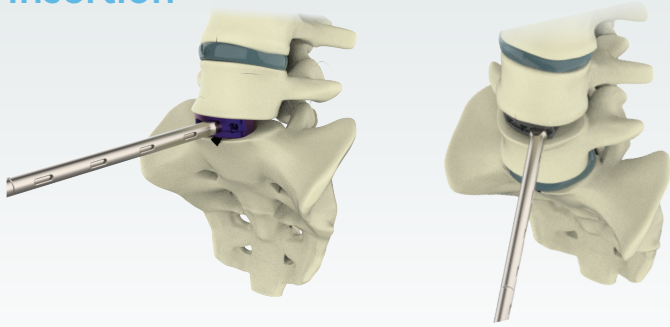
TrellOss-A Sizes

| Trial color | Footprint | Lordosis | Height* |
|---|---------------|----------|-------------|
|  | 24 mm x 32 mm | 8° | 8 mm–18 mm |
|  | 24 mm x 32 mm | 14° | 10 mm–20 mm |
|  | 24 mm x 32 mm | 20° | 12 mm–20 mm |
|  | 27 mm x 36 mm | 8° | 8 mm–20 mm |
|  | 27 mm x 36 mm | 14° | 10 mm–20 mm |
|  | 27 mm x 36 mm | 20° | 12 mm–20 mm |



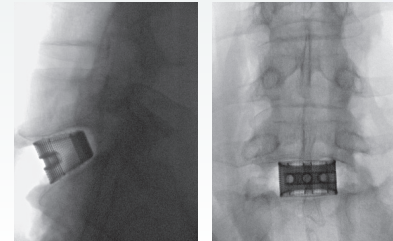
*2 mm increments

Insertion

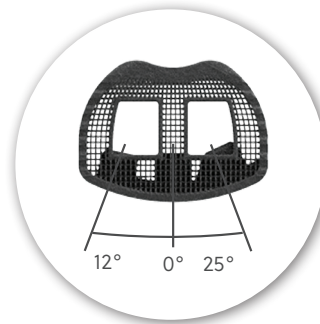
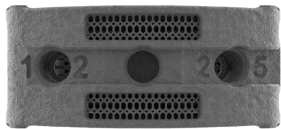
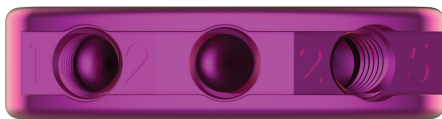


Imaging

- Aligned pore structure allows optimal fluoroscopy when assessing fusion post-operatively



Insertion Options



Insertion angles for trials and implants:

- 0° center
- 12° offset
- 25° offset

A New Foundation for Growth

Porosity

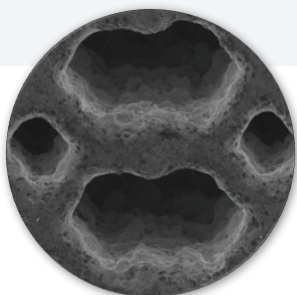
Open architecture with 70% porosity including varying pore sizes of 300, 500, and 700 μm that mimic cancellous bone allowing for a conducive environment for cellular activity^{1,5,6,7}

Structure

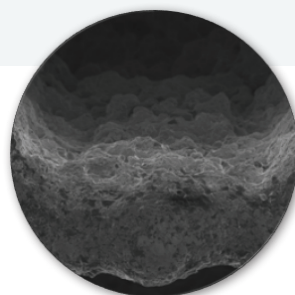
Scaffolding structure provides additional surface area^{2,3} and an elastic modulus similar to PEEK⁸

Texture

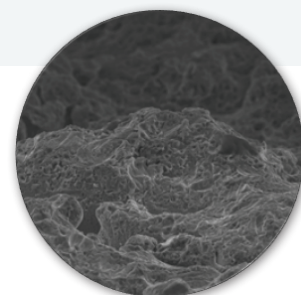
7 micron surface texturing enhances the wicking nature⁹ and creates an environment for potential cellular adhesion^{2,3,4}



SEM image of TrellOss Surface at 50x magnification



SEM image of TrellOss Surface at 100x magnification



SEM image of TrellOss Surface at 450x magnification

For more information visit [ZimVie.com](https://www.zimvie.com)



Manufactured by:
Nexxt Spine, LLC
14425 Bergen Blvd, Suite B
Noblesville, IN 46060
Ph: 317.436.7801
Fax: 317.245.2518

Distributed by:
ZimVie Spine, Inc.
10225 Westmoor Dr.
Westminster, CO 80021 USA
[ZimVie.com](https://www.zimvie.com)



References

1. McGilvray KC, Easley J, Seim HB, et al. Bony ingrowth potential of 3D printed porous titanium alloy: a direct comparison of interbody cage materials in an in vivo ovine lumbar fusion model. *Spine J* 2018;18(7):1250-1260. 2. Olivares-Navarrete R, Hyzy SL, Slosar PJ et al. Implant materials generate different peri-implant inflammatory factors: poly-ether-ether-ketone promotes fibrosis and microtextured titanium promotes osteogenic factors. *Spine* 2015;40(6):399 -404. 3. Olivares-Navarrete R, Hyzy SL, Gittens RA, et al. Rough titanium alloys regulate osteoblast production of angiogenic factors. *Spine J* 2013;13(11):1563 -70. 4. Rao PJ, Pelletier MH, Walsh WR, et al. Spine Interbody Implants: Material Selection and Modification, Functionalization and Bioactivation of Surfaces to Improve Osseointegration. *Orthop Surg* 2014;6:81 -89. 5. Ponader S, von Wilmowsky C, Widenmayer M, et al. In vivo performance of selective electron beam-melted ti-6al-4v structures. *J Biomed Mater Res A* 2010;92A:56 -62. 6. Li JP, Habibovic P, et al.: Bone ingrowth in porous titanium implants produced by 3D fiber deposition. *Biomaterials* 2007;28:2810. 7. Karageorgiou V, Kaplan D. Porosity of 3D biomaterial scaffolds and osteogenesis. *Biomaterials* 2005;26(27):5474 -91. 8. Permeswaran, V., (2019) Elastic Modulus Characterization of Porous Titanium TrellOss™ Structure, 2922.1-GLBL-en-REV1219, Zimmer Biomet Spine, Westminster, CO 9. Permeswaran, V., (2019) Measuring the Wicking Nature of Porous Titanium TrellOss™ Structure, 2921.1-GLBL-en-REV1219, Zimmer Biomet Spine, Westminster, CO.

Unless otherwise indicated, as referenced herein, all trademarks and intellectual property rights are the property of ZimVie Inc. or an affiliate; and all products are manufactured by one or more of the spinal subsidiaries of ZimVie Inc. (Zimmer Biomet Spine, Inc., Zimmer Spine, etc.) and marketed and distributed by ZimVie Spine and its authorized marketing partners. For additional product information, please refer to the individual product labeling or instructions for use. Product clearance and availability may be limited to certain countries/regions. This material is intended for clinicians only and does not comprise medical advice or recommendations. Distribution to any other recipient is prohibited. This material may not be copied or reprinted without the express written consent of ZimVie Inc. ZV0829 REV A 03/23 ©2023 ZimVie Inc. All rights reserved.