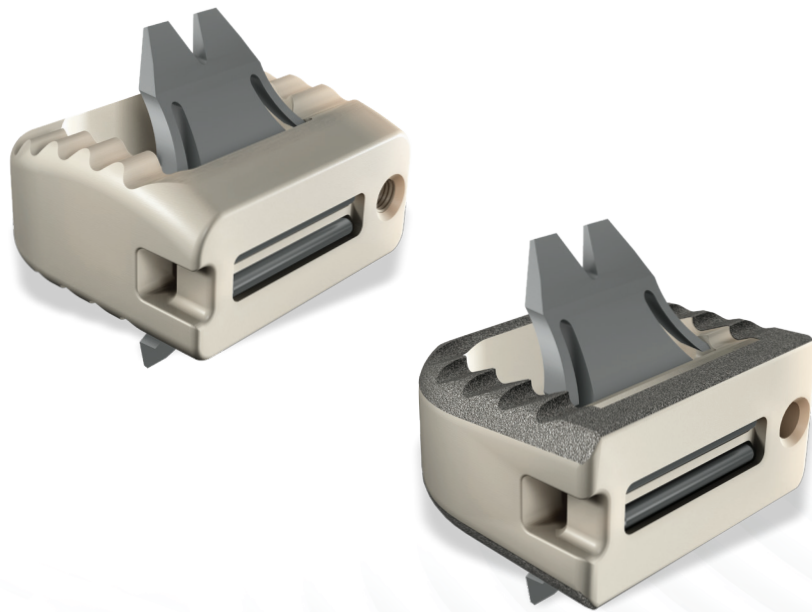


ROI-C[®]

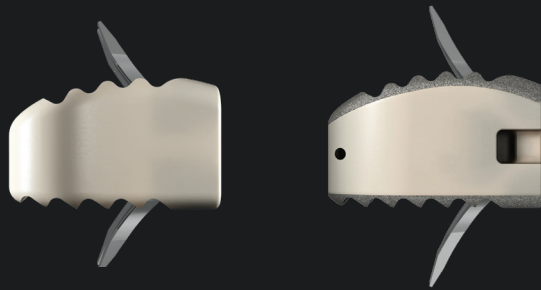
Cervical Disc

A zero-profile, stand-alone*
cervical cage featuring
VerteBRIDGE[®] plating.



HIGHRIDGE

ROI-C

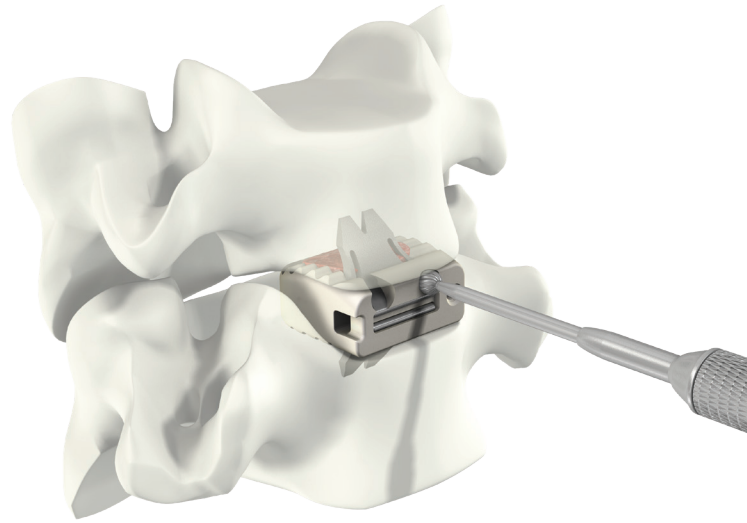


**A sleek and minimalistic
stand-alone solution.**

Streamlined instrumentation functions in-line with the disc space, requiring minimal exposure, while an innovative implant design leaves minimal hardware in the patient, all without sacrificing stability.



Industry leading range
of shapes, surfaces,
footprints, and heights to
fit diverse anatomy.



Product Features



Simplicity

- Ease of use: the ROI-C surgical technique requires fewer steps than a traditional ACDF (with plate and screws).
- A mini open technique allows for less retraction.
- ROI-C with VerteBRIDGE offers a complete solution for an anterior cervical fusion.
- No hardware whatsoever protrudes anterior of the vertebral body.



Confidence

- With two geometries and more footprints than any other competitive product, surgeons can select the perfect fit for any anatomy.
- PEEK® and Titanium-coated PEEK® accommodate surgeon choice and preference.
- Streamlined instrumentation alleviates challenges of patient natomy, such as the chin.
- Large fit and fill of available footprints provides initial stability, while self-locking plates are designed for initial and long-term stability.



Experience

- Over 80,000 implantations performed using VerteBRIDGE plating.
- Biomechanical testing demonstrates that ROI-C with VerteBRIDGE plating performs at a similar level to other products on the market.
- ROI-C with VerteBRIDGE plating is the stand-alone* market leader.

Biomechanical Stability

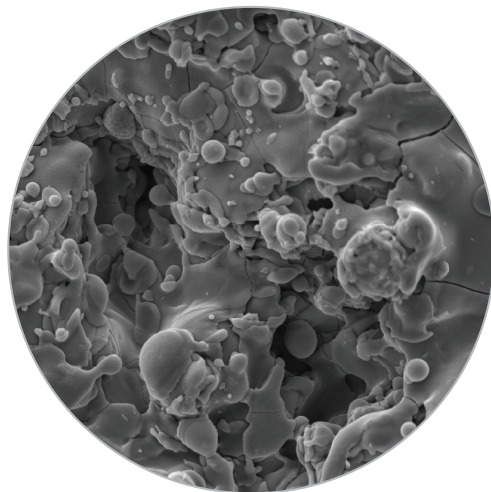
In biomechanical testing performed to compare the stability of ROI-C to a competitive PEEK® cage and metal cervical plate, the ROI-C construct significantly reduced the range of motion in all directions versus the intact state. In flexion-extension, lateral bending, and axial torsion, the ROI-C with VerteBRIDGE Plating showed lower ROM than published data of conventional construct.

Titanium Coating



Serrated ridges help stabilize the implant

ROI-C Titanium has up to 120 μm of porous, plasma-sprayed titanium on both the serrated endplate-facing surfaces.



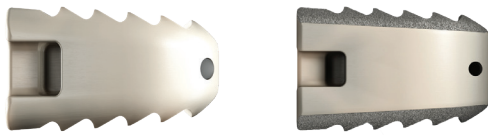
750 x magnification of the titanium-coated surface

PEEK-OPTIMA® cage with titanium coating provides the benefits of biocompatible titanium, while still allowing for postoperative radiographic imaging.

ROI-C Sizing Options

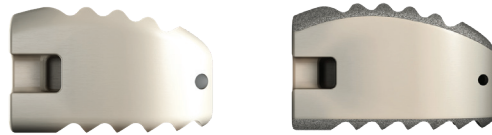
Lordotic

Designed to allow close contact with the bone of patients with flattened endplates.

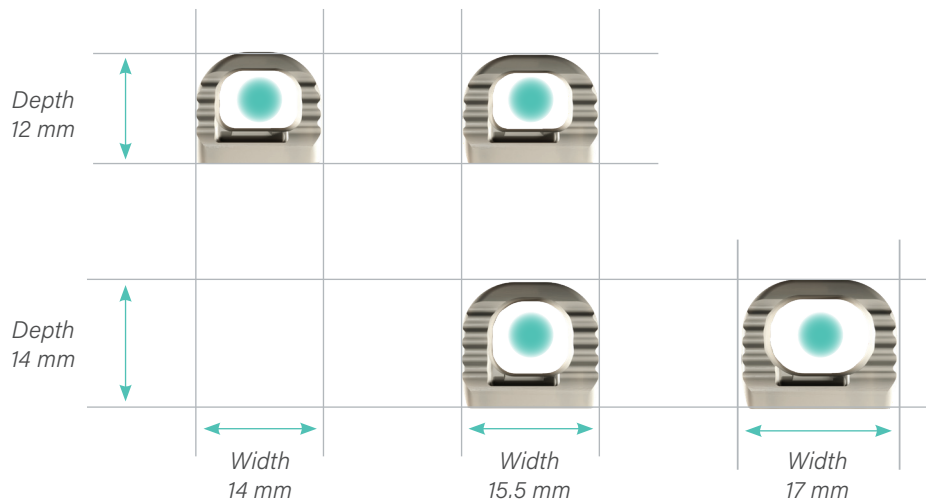


Anatomic

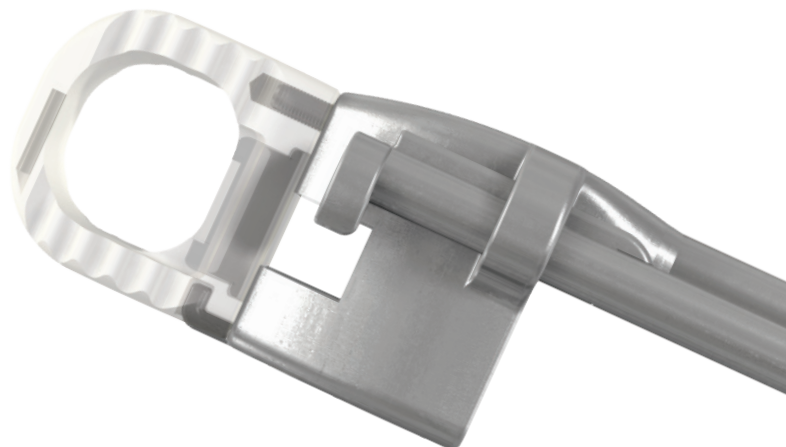
Features a superior edge that complements healthy endplate contours.



4 Footprints



With two geometries and more footprints than any other competitive product, surgeons can select the perfect fit for any anatomy.

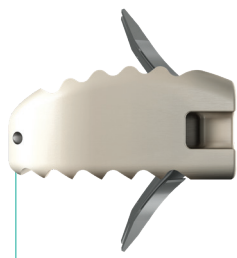


ROI-C Cervical Cages Sizing Chart

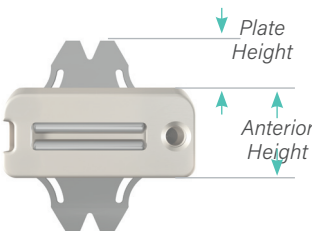
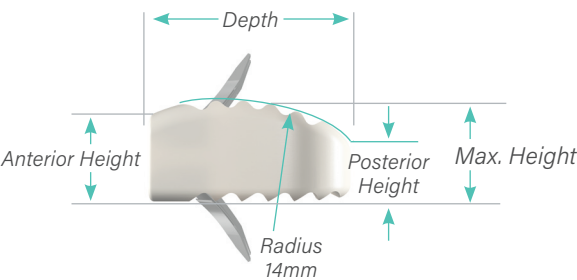
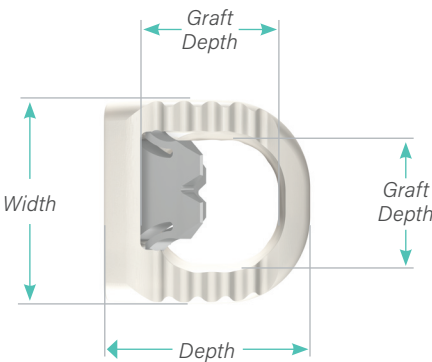
Lordotic	SIZE (mm)		HEIGHT (mm)		GRAFT VOL. (CC)
	REF NUMBER	(DEPTH x WIDTH)	ANTERIOR	POSTERIOR	
	MC 1441 P	12 x 14, H5	5	2.3	0.3
	MC 1442 P	12 x 14, H6	6	3.1	0.35
	MC 1443 P	12 x 14, H7	7	4.1	0.41
	MC 1444 P	12 x 14, H8	8	5.1	0.47
	MC 1445 P	12 x 14, H9	9	6.1	0.53
	MC 1446 P	12 x 14, H10	10	7.1	0.59
	MC 1451 P	12 x 15.5, H5	5	2.3	0.3
	MC 1452 P	12 x 15.5, H6	6	3.1	0.35
	MC 1453 P	12 x 15.5, H7	7	4.1	0.41
	MC 1454 P	12 x 15.5, H8	8	5.1	0.47
	MC 1455 P	12 x 15.5, H9	9	6.1	0.53
	MC 1456 P	12 x 15.5, H10	10	7.1	0.59
	MC 1421 P	14 x 15.5, H5	5	2.4	0.36
	MC 1422 P	14 x 15.5, H6	6	3.2	0.42
	MC 1423 P	14 x 15.5, H7	7	4.2	0.49
	MC 1424 P	14 x 15.5, H8	8	5.1	0.47
	MC 1425 P	14 x 15.5, H9	9	6.2	0.53
	MC 1426 P	14 x 15.5, H10	10	7.2	0.72
	MC 1431 P	14 x 17, H5	5	2.4	0.36
	MC 1432 P	14 x 17, H6	6	3.2	0.52
	MC 1433 P	14 x 17, H7	7	4.2	0.61
	MC 1434 P	14 x 17, H8	8	5.2	0.71
	MC 1435 P	14 x 17, H9	9	6.2	0.8
	MC 1436 P	14 x 17, H10	10	7.2	0.89

Anatomic	SIZE (mm)		HEIGHT (mm)			GRAFT VOL. (CC)
	REF NUMBER	(DEPTH x WIDTH)	ANTERIOR	MAXIMUM	POSTERIOR	
	MC 1341 P	12 x 14, H5	5	5.5	3	0.31
	MC 1342 P	12 x 14, H6	6	6.5	4	0.36
	MC 1343 P	12 x 14, H7	7	7.5	5	0.41
	MC 1344 P	12 x 14, H8	8	8.5	6	0.45
	MC 1351 P	12 x 15.5, H5	5	5.5	3	0.31
	MC 1352 P	12 x 15.5, H6	6	6.5	4	0.36
	MC 1353 P	12 x 15.5, H7	7	7.5	5	0.41
	MC 1354 P	12 x 15.5, H8	8	8.5	6	0.45
	MC 1321 P	14 x 15.5, H5	5	5.9	3	0.42
	MC 1322 P	14 x 15.5, H6	6	6.9	4	0.48
	MC 1323 P	14 x 15.5, H7	7	7.9	5	0.54
	MC 1324 P	14 x 15.5, H8	8	8.9	6	0.60
	MC 1331 P	14 x 17, H5	5	5.9	3	0.51
	MC 1332 P	14 x 17, H6	6	6.9	3	0.60
	MC 1333 P	14 x 17, H7	7	7.9	5	0.67
	MC 1334 P	14 x 17, H8	8	8.9	6	0.75

ROI-C Implant Design

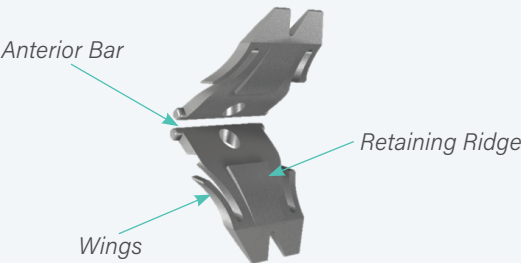


1 mm from center of Tantalum marker to the posterior edge.



ROI-C Plates

Three locking mechanisms



ROI-C Plate Selection Table

Select the plate length according to the implant height

- Use ROI-C Standard Plates (MC1007T, two plates/box)[†] with implants heights 5-7 mm
- Use ROI-C Long Plates (MC1008Tm two plates/box)[†] with implant heights 8-10 mm

ROI-C Anatomic

Implant Height (mm)	H5	H6	H7	H8
Plate Size	Standard (MC1007T)			Long (MC1008T)
Plate Height (mm)	5.5	5.0	4.5	5.6

ROI-C Lordotic

Implant Height (mm)	H5	H6	H7	H8	H9	H10
Plate Size	Standard (MC1007T)			Long (MC1008T)		
Plate Height (mm)	5.7	5.3	4.8	5.9	5.4	4.9

[†] MC1007T and MC1008T are part numbers for individual standard and long plates, respectively.

For more information, visit [highridgemedical.com](https://www.highridgemedical.com)

Highridge Medical
10225 Westmoor Drive
Westminster, CO 80021



References:

1. "Cadaveric Biomechanical Evaluation of the ROI-C Cervical Cage with VerteBRIDGE Plating Technology" LDR REF: IR-C T 1 EN 12.2010 B US

*In cases of trauma, vertebral instability, or significant bone removal, the ROI-C implant should be augmented with additional supplemental fixation.

Unless otherwise indicated, as referenced herein, all trademarks and intellectual property rights are the property of Highridge Medical, LLC or an affiliate; and all products are manufactured by one or more of the spinal subsidiaries of Highridge Medical, LLC and marketed and distributed by its authorized marketing partners. Please refer to the Instructions for Use, package labeling, and applicable Surgical Technique Guide. Product clearance and availability may be limited to certain countries/regions. This material does not comprise medical advice or recommendations. Distribution to any other recipient is prohibited. This material may not be copied or reprinted without the express written consent of Highridge Medical. HM0541 REV A US-EN 07.2025 ©2025 Highridge Medical, LLC.