

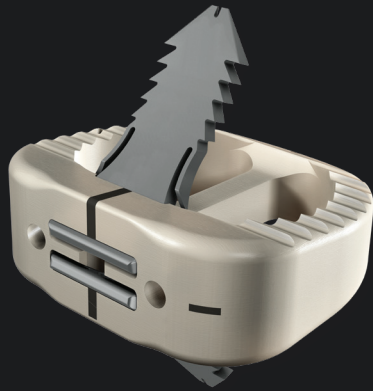
# ROI-A<sup>®</sup>

ALIF Cage

Utilizing innovative  
VerteBRIDGE<sup>®</sup> plating  
technology



**HIGHRIDGE**



*ROI-A ALIF Cage*



*ROI-A Oblique ALIF Cage*

## **ROI-A<sup>®</sup> ALIF Cage with VerteBRIDGE<sup>®</sup> Plating Technology**

The ROI-A system utilizes innovative VerteBRIDGE plating technology in an ALIF application, to deliver integrated fixation in the same plane as the disc space.



# Deliver with Accuracy

The ROI-A cage with VerteBRIDGE fixation offers a unique system in which integrated fixation is delivered in a self-guided fashion with the implant holder. This allows for accurate impaction of self-locking VerteBRIDGE plating, giving surgeons confidence in the plating trajectory.



## Customization

Multiple footprints, lordosis, and heights as well as three plate lengths for optimized fit and stability in various patient anatomies.



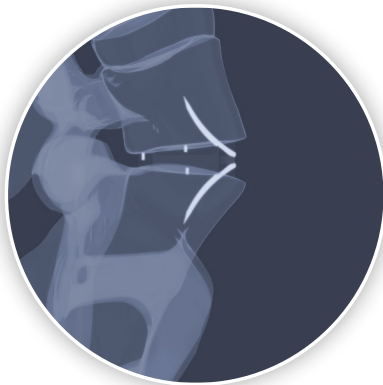
## Visualization

PEEK-OPTIMA® material for biocompatibility and radiolucency, and Tantalum markers for verification of cage positioning.



## Security

Self-guided, self-locking plating system within the implant holder protects soft tissue anatomy from contact during integrated fixation delivery.



*ROI-A Cage Lateral view*



*ROI-A Cage AP view*



*ROI-A Oblique Cage Lateral view*

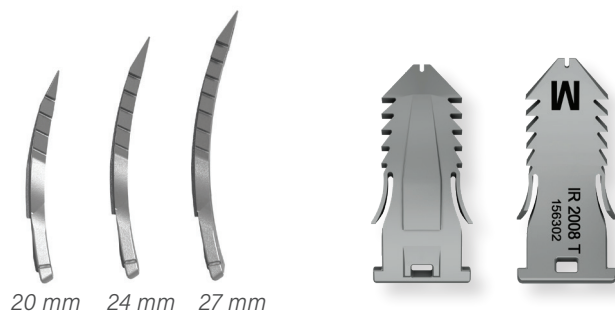


*ROI-A Oblique Cage AP view*

# ROI-A Dimensions

The ROI-A system offers a wide range of implant options, as well as an oblique option, in each implant kit to address a variety of patient anatomies and surgical situations.

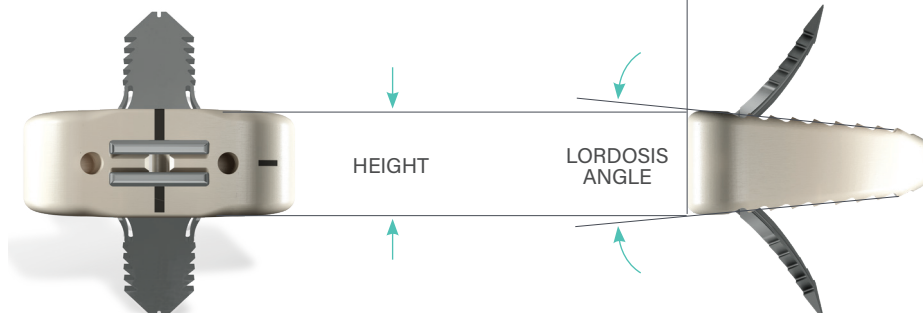
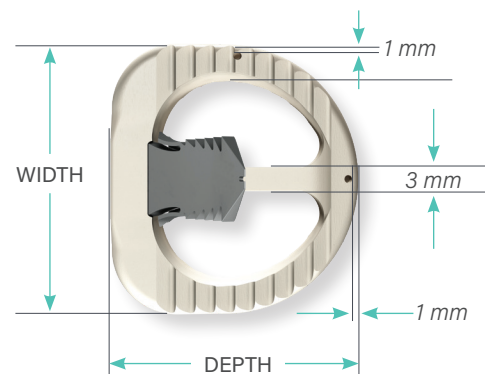
## Plate Lengths



## ROI-A PRODUCT RANGE AND SIZING †

	23 mm x 26 mm
Footprints	27 mm x 30 mm
(Depth x Width)	27 mm x 36 mm
	30 mm x 39 mm
Lordosis	6°, 10° and 14°
Heights	10 mm, 12 mm, 14 mm, and 16 mm

†Product availability may vary by country and market.



# ROI-A Oblique Dimensions

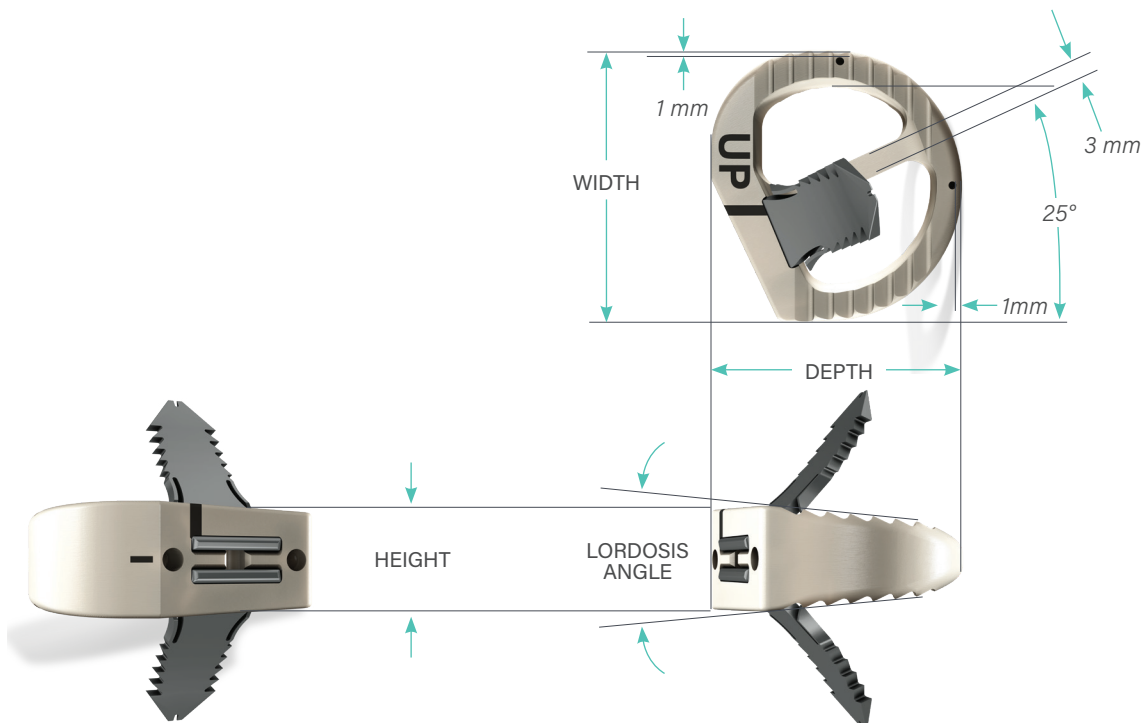
The ROI-A Oblique ALIF cage system is a novel system designed for zero-profile, stand-alone\* lumbar interbody fusion. While it shares the features and benefits of the original ROI-A ALIF cage, which was designed for direct anterior insertion, the ROI-A Oblique cage and VerteBRIDGE plating can be inserted from a 25° anterolateral angle that may reduce retraction of the great vessels and minimize the associated management of segmental vessels. It also avoids the neurologic challenges of lateral trans-psoas techniques. These can be key advantages when treating degenerative disease of the lumbar spine, particularly at the L4-L5 level.



## ROI-A OBLIQUE PRODUCT RANGE AND SIZING †

Footprints (Depth x Width)	27 mm x 30 mm
Lordosis	6° and 10°
Heights	10 mm, 12 mm, 14 mm, and 16 mm

†Product availability may vary by country and market.



\*In cases of spondylolisthesis or vertebral instability, the ROI-A implant should be augmented with additional supplemental fixation

For more information visit [highridgemedical.com](https://highridgemedical.com)

Highridge Medical  
10225 Westmoor Drive  
Westminster, CO 80021



Unless otherwise indicated, all trademarks are the property of Highridge. For additional product information, such as risks and contraindications, please refer to the individual product labeling or instructions for use. Product clearance and availability may be limited to certain countries/regions. This material is intended for clinicians only and does not comprise medical advice or recommendations. This material may not be copied or reprinted without the express written consent of Highridge. HM0537 Rev A US-EN 2025.07 ©2025 Highridge Medical, LLC.