

Polaris™ 4.75 Deformity System

Thoracolumbar Solutions

Featuring first-to-market
curved axial connectors
and support for both a
4.5 mm and 4.75 mm rod



HIGHRIDGE

Polaris™ 4.75 System

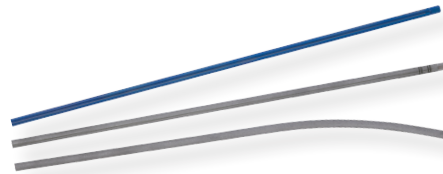
A Complete Evolution

Engineered with simple, intuitive instrumentation that supports multiple correction techniques, the Polaris 4.75 System is the next step in advancing deformity correction procedures. The system offers a complete array of treatment options that supports both adolescent idiopathic and pediatric scoliosis.



Screws

- Fixed, closed-head and multiaxial screw options
- Screw heads accommodate both a 4.5 mm or 4.75 mm rod
- Multiaxial and fixed screws available in 20 mm, 22.5 mm and 25 mm lengths



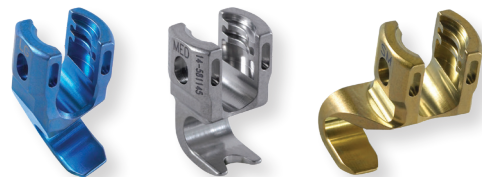
Rods

- Rods available in titanium and two strengths of cobalt chrome
- Transition rods available from 4.75 mm to 5.5 mm
- Unique Rocket™ Rod Reducer provides 30 mm of reduction with 15 mm of medial lateral capture



Connectors

- Comprehensive selection of connectors supports extensions, revisions and challenging anatomies

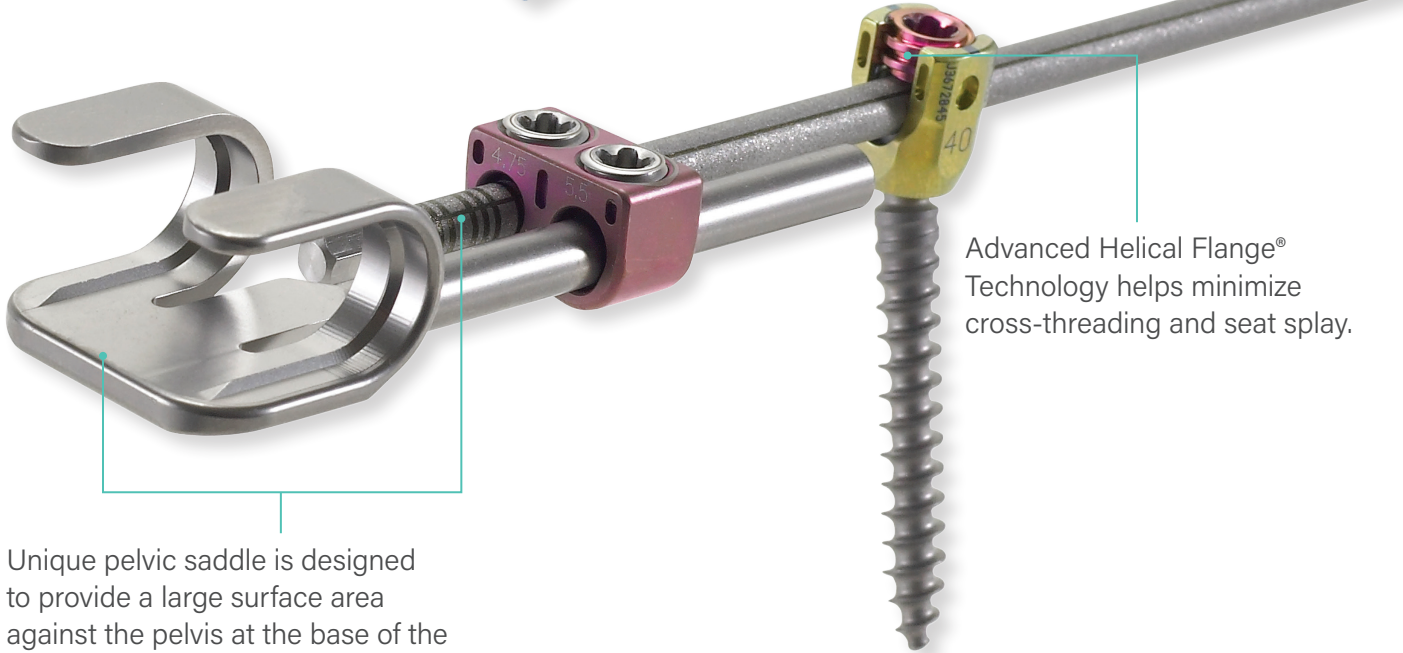


Hooks

- Universal hook system provides surgeons with interoperative flexibility
- Comprehensive selection of hooks supports a wide range of surgical techniques

A Complete Design

First-to-market curved axial connectors and pre-curved rods facilitate interoperative internal distraction with control of sagittal alignment.



Advanced Helical Flange® Technology helps minimize cross-threading and seat splay.

Unique pelvic saddle is designed to provide a large surface area against the pelvis at the base of the construct. The system also features two internal ridges.

The Polaris 4.75 System is compatible with Highridge Medical's award-winning Trivium® Derotation System for deformity correction.

For more information, visit highridgemedical.com

Highridge Medical
10225 Westmoor Drive
Westminster, CO 80021



Disclaimer: This document is intended exclusively for physicians and is not intended for laypersons. Information on the products and procedures contained in this document is of a general nature and does not represent and does not constitute medical advice or recommendations. Because this information does not purport to constitute any diagnostic or therapeutic statement with regard to any individual medical case, each patient must be examined and advised individually, and this document does not replace the need for such examination and/or advice in whole or in part.

Caution: Federal (USA) law restricts this device to sale by or on the order of a physician. Rx only. Please refer to the package inserts for important product information, including, but not limited to, indications, contraindications, warnings, precautions, adverse effects, and patient counseling information.

Unless otherwise indicated, all trademarks are the property of Highridge. For additional product information, such as risks and contraindications, please refer to the individual product labeling or instructions for use. Product clearance and availability may be limited to certain countries/regions. This material is intended for clinicians only and does not comprise medical advice or recommendations. This material may not be copied or reprinted without the express written consent of Highridge. HM0526 Rev A US-EN 04.2025 ©2025 Highridge Medical, LLC. All rights reserved.

