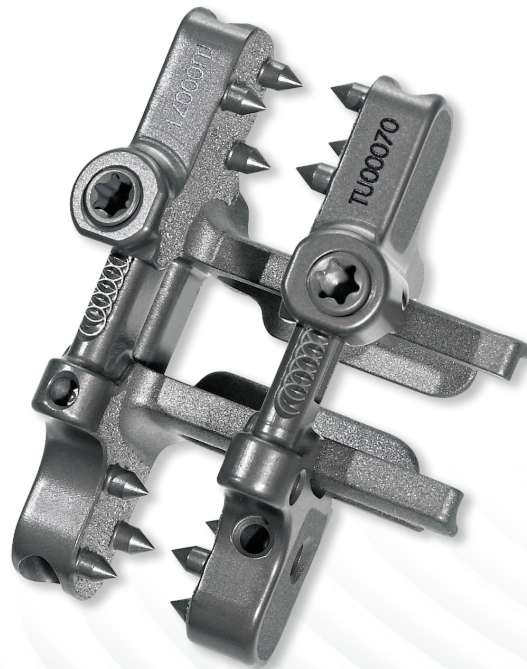


Alpine XC™

Adjustable Fusion System

Provides the procedural and patient benefits of an interspinous approach with adjustable sizing capabilities.



HIGHRIDGE

Adjust Your Implant, Not Your Technique

As surgeons and patients increasingly demand minimally invasive alternatives to traditional pedicle screws, spinous process fixation has fulfilled an unmet clinical need in spinal fusion surgery. The Alpine XC Adjustable Fusion System enables variable sizing and provides in situ compression/distraction capabilities similar to pedicle screws while reducing time, risks, and muscle trauma associated with screw placement.

DESIGNED FOR IN SITU CONTROL



Adjustable Sizing

Alpine XC is the only spinous process fixation device with an adjustable, fenestrated core and adjustable-length plates.

Variable sizing allows for an optimized, anatomic fit.



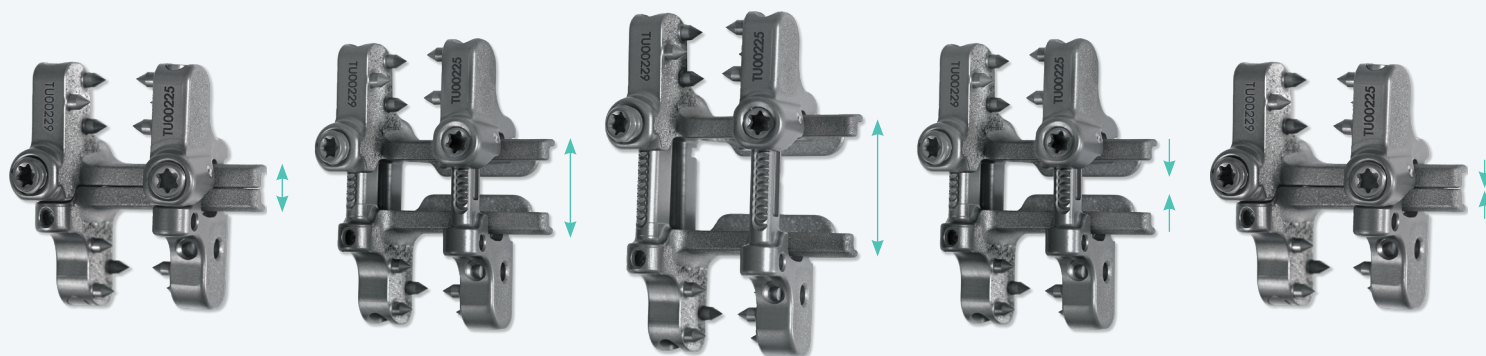
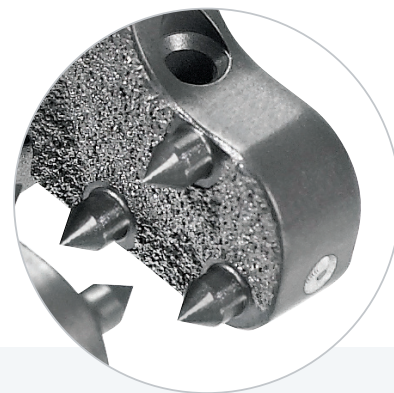
Optimized Surgical Technique

Alpine XC allows device insertion in a small, collapsed configuration, enabling minimally invasive exposure.

In situ device compression and distraction provides the surgeon with lordosis control and the ability to load interbody grafts.

Advanced Coating Technology

Alpine XC is the only spinous process fixation device on the market that features titanium plasma spray coating, specifically designed to enhance fixation at the bone-implant interface.



Alpine XC Specifications

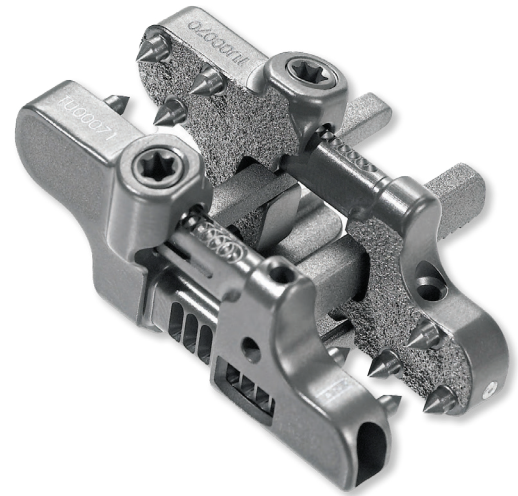
Adjustable Post-Plate

POST LENGTH	ADJUSTABLE HEIGHT RANGE	PART NUMBER
Medium	6 mm–18 mm	6305-1003
	10 mm–18 mm*	6305-1103
Wide	6 mm–18 mm	6306-1003
	10 mm–18 mm*	6306-1103

*Special order

Adjustable Lock-Plate

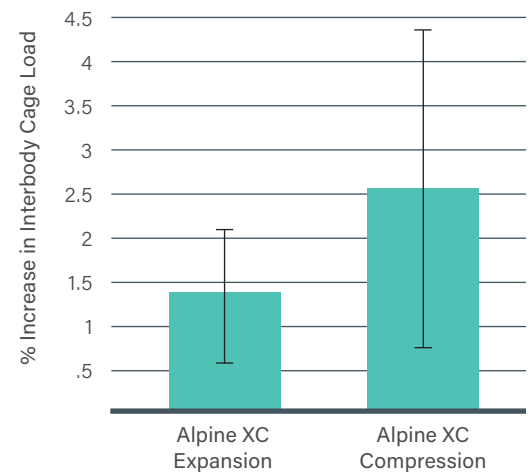
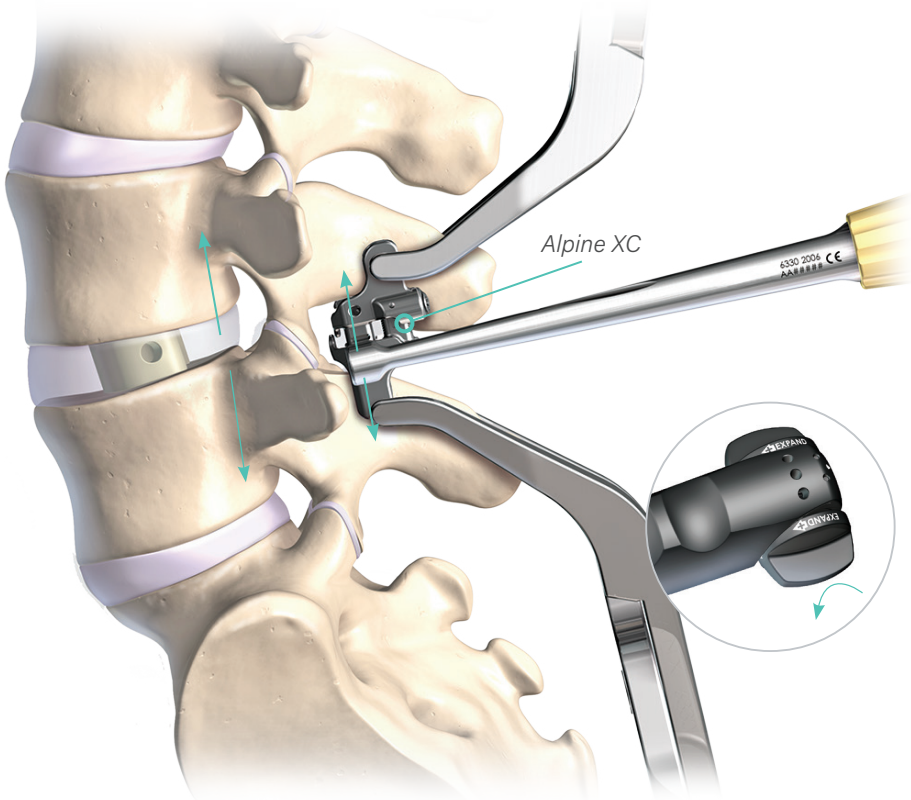
PART NUMBER
6310-1003



Technique Advantages

Insert collapsed – Distract and compress on demand

Alpine XC inserts in a collapsed configuration, enabling minimally invasive exposure.



In situ device compression and distraction provides the surgeon with lordosis control and the ability to load interbody grafts.¹

For more information, visit highridgemedical.com

Highridge Medical
10225 Westmoor Drive
Westminster, CO 80021



Reference

1. Gandhi A. Alpine XC Adjustable Fusion System versus Pedicle Screw Fixation: A Biomechanical Study of Interbody Cage Load and Segmental Lordosis in LLIF. Presented at SMISS Global Forum 2014.

Unless otherwise indicated, all trademarks are the property of Highridge. For additional product information, such as risks and contraindications, please refer to the individual product labeling or instructions for use. Product clearance and availability may be limited to certain countries/regions. This material is intended for clinicians only and does not comprise medical advice or recommendations. This material may not be copied or reprinted without the express written consent of Highridge. HM0487 Rev A US-EN 07.2025 ©2025 Highridge Medical, LLC. All rights reserved.